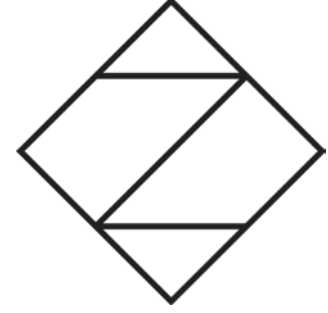


Atelier 216



Amagansett



Atelier by Studio Zung

Atelier by Studio Zung is a collection of intelligently designed, meticulously appointed and artfully curated residences, fully integrated with smart-home details.

For the astute buyer, purposefully designed residences located in the most sought after addresses in New York and the Hamptons. Designer furnished and finely detailed, ready to move in on day one.

Atelier by Studio Zung seamlessly integrates eco-luxury, simple and straightforward design, and an intelligent curation of finishings and technology - all effortlessly combined to create a uniquely elevated lifestyle.

While creativity and innovation are at the core of our design, we pride ourselves on making unique creations for each and every project.

Our award winning architects and designers are highly attentive to every fine detail of design and execution. The end result is a one-of-a-kind Atelier by Studio Zung residence: intelligently integrated, effortlessly luxurious, and functionally stylish homes.

Day One Living

Our distinctive and fully integrated residences are ready to move into from day one; we have taken care of every lifestyle detail so homeowners can enjoy the Atelier by Studio Zung lifestyle and luxury from the first day on.

Artfully Curated

Each residence is fitted and designed with its own thoughtfully chosen finishes, furnishings, artwork, and landscaping to ensure every home and space is personalized and refined.

Sustainable

Every Atelier by Studio Zung is built on design that is not only luxurious, but sustainable. By integrating eco-luxury into our simple, straightforward designs and materials we ensure a maximum balance with our holistic and ecological principles.

Purposefully Built

Each Atelier by Studio Zung is customized with an individual design and vision that takes into account the unique features of the landscape and surroundings. While we apply the same design aesthetic and principles to each project, no two Atelier by Studio Zung residences are the same.

Simple Luxury

The Ateliers evoke modern and straightforward comfort and elegance with an emphasis on design and enduring amenities.





6	The Heritage of the Hamptons
8	Atelier 216
24	Features
30	Brizo® for Atelier by Studio Zung
36	Studio Zung
38	Keep In Touch

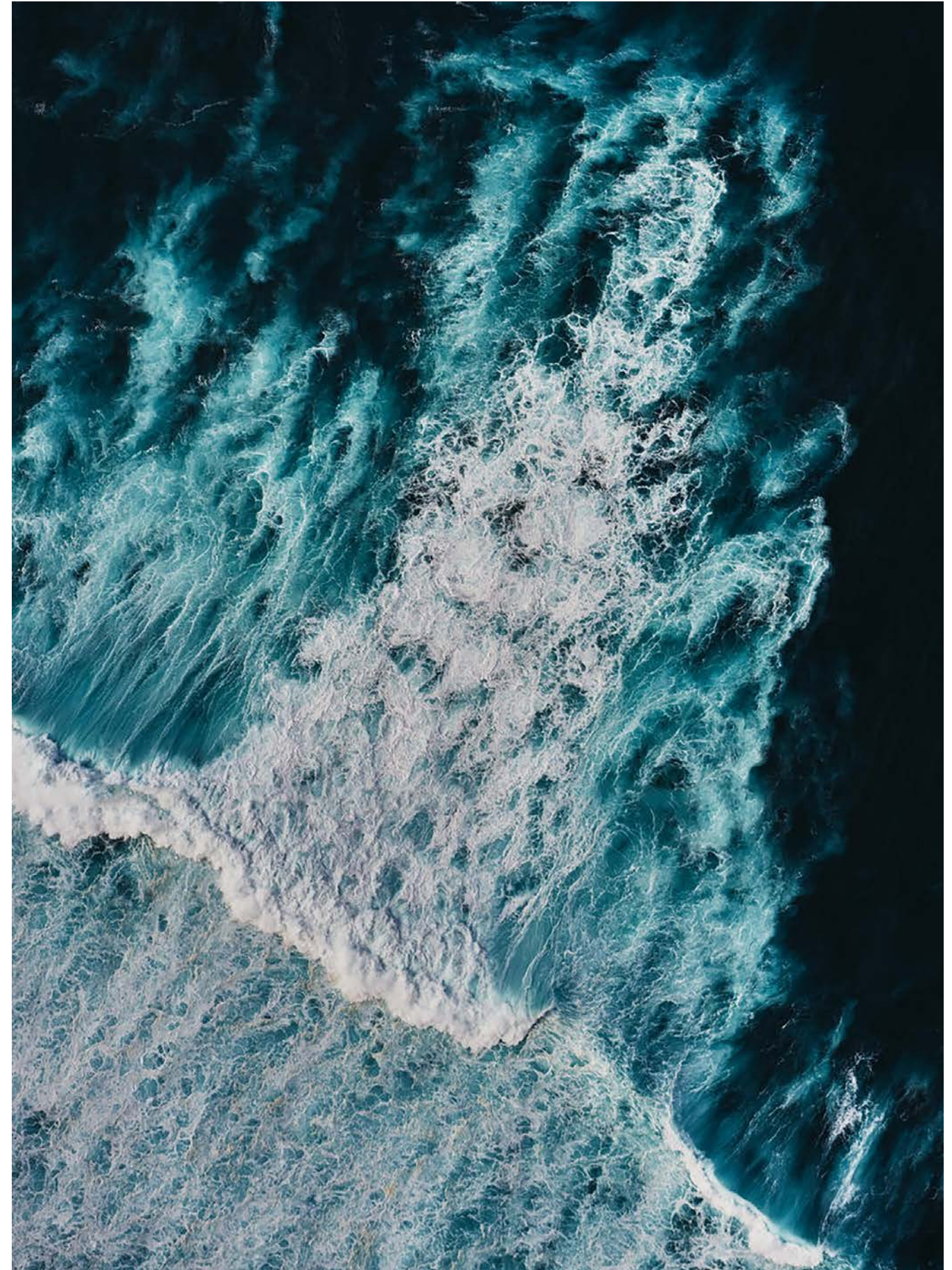
The Heritage of the Hamptons

Amagansett

Located in the town of East Hampton, Amagansett offers residents with the unique charm of The Hamptons while maintaining a more down-to-earth character when compared to its counterparts. The name of the town comes from a Native American word meaning "place of good water." As a popular location during the summer, Amagansett serves as a summer residence for many illustrious people, including Paul McCartney, Scarlett Johansson, Laurie Anderson, Lou Reed, Arthur Miller, Alec Baldwin and Gwyneth Paltrow.

The Hamptons

There is a certain quality of life to The Hamptons. As one of the historical and extravagant summer colonies of the American Northeast, The Hamptons are known to be one of the worlds few coveted summer communities for those looking to have the luxury of living in a beautiful home while enjoying the serene atmosphere of the surrounding community. Home to some of the most prestigious and desirable residential properties in the United States, the Hamptons are distinguished by a large number of retail shops, extensive arts community, marvelous scenery and the majestic Atlantic Ocean.



Atelier 216

Lifestyle

Atelier 216 is a 3,800 square foot eco-luxury modern barn with five bedrooms, four and a half bathrooms, a separate climatized pool house studio with a full bathroom, and double carport.

Atelier 216 is the perfect combination of luxury, simplicity, and privacy. The native greenery mixed with design landscaping provides its residents with a serene welcome. For those who love nature Atelier 216 is moments away from Dennistown Bell Park and Napeague State Park. Residents can also stroll over to Atlantic or Napeague beaches and Napeague Bay to enjoy the soothing beach vibes.





The building is a two-story structure with vertical wood siding and dark metal roofs. It features a prominent gabled section with large, multi-paned windows. A covered entrance with a dark frame and stairs leads to the main level. A deck area with a black metal railing is visible on the right side. The house is surrounded by a landscaped garden with various plants and a gravel path.

A set of concrete stairs with a black metal railing and a wooden handrail, leading up to the covered entrance of the house.

A deck area with a black metal railing, featuring a small table and chairs, situated on the right side of the house.

A landscaped garden area in the foreground, featuring a gravel path, various plants including tall grasses, purple flowers, and small evergreen trees, and a concrete retaining wall.

The Design

Atelier 216 features a double carport as well as a clerestory west wall and outdoor patio equipped with bi-fold doors opening to the pool, pool house, outdoor kitchen and dining deck. The eco-smart saline swimming pool is paired with a separate studio pool house. Atelier 216 features 16' vaulted ceilings with salvaged pine barn beams with a zen garden, edible garden, and courtyard garden.

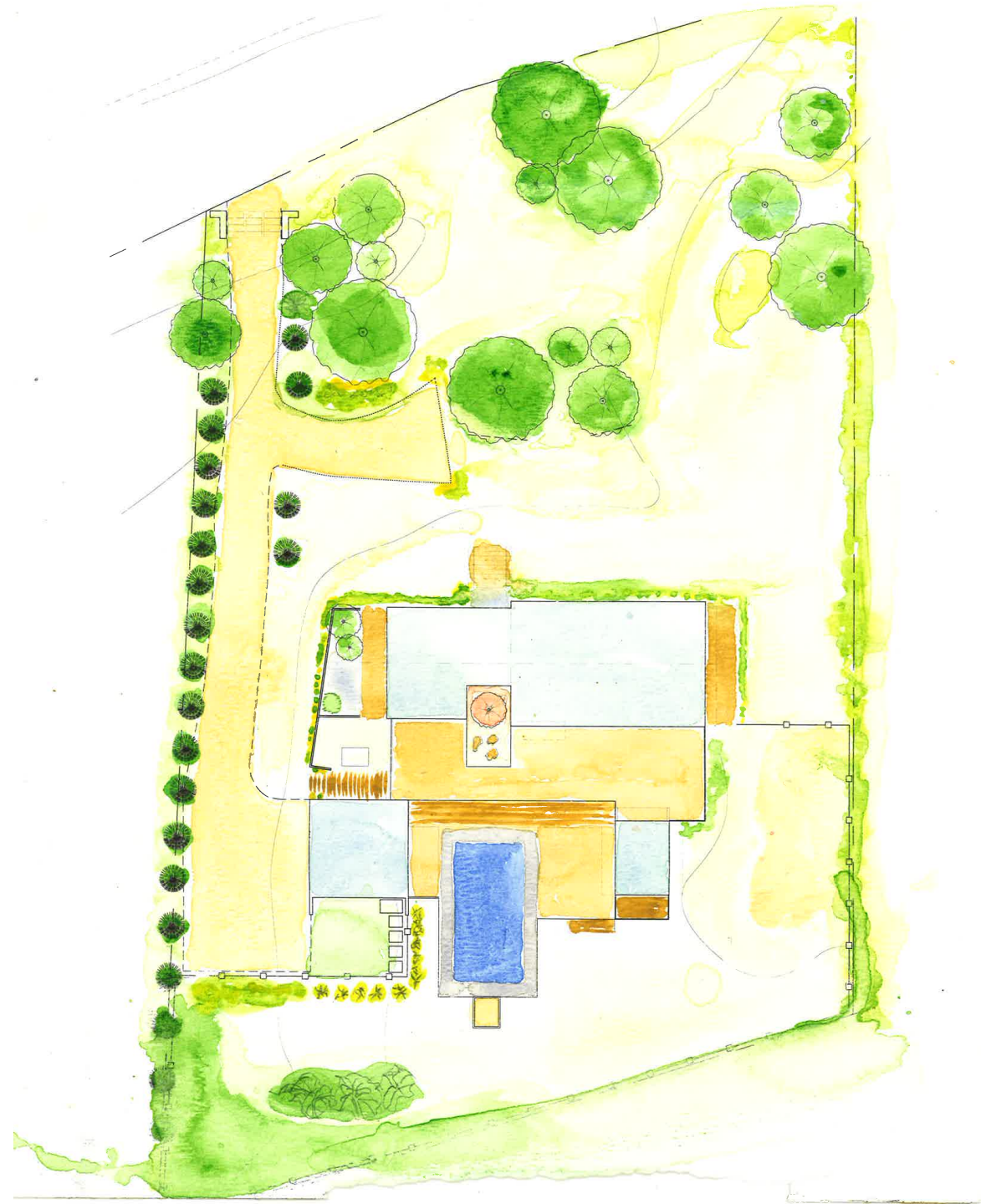
Total SQ Footage
5,900 SF / 550 M²
Resident SQ Footage
3,800 SF / 353 M²
Pool House SQ Footage
200 SQF / 18.6 M²
Outdoor Decking
2,500 SF / 232 M²
Interior Garden
650 SF / 60.4 M²
Pool
16 FT x 32 FT / 4.9 M x 9.8 M
Eco-smart Saline
Garage SQ Footage
500 SF / 46.5 M²





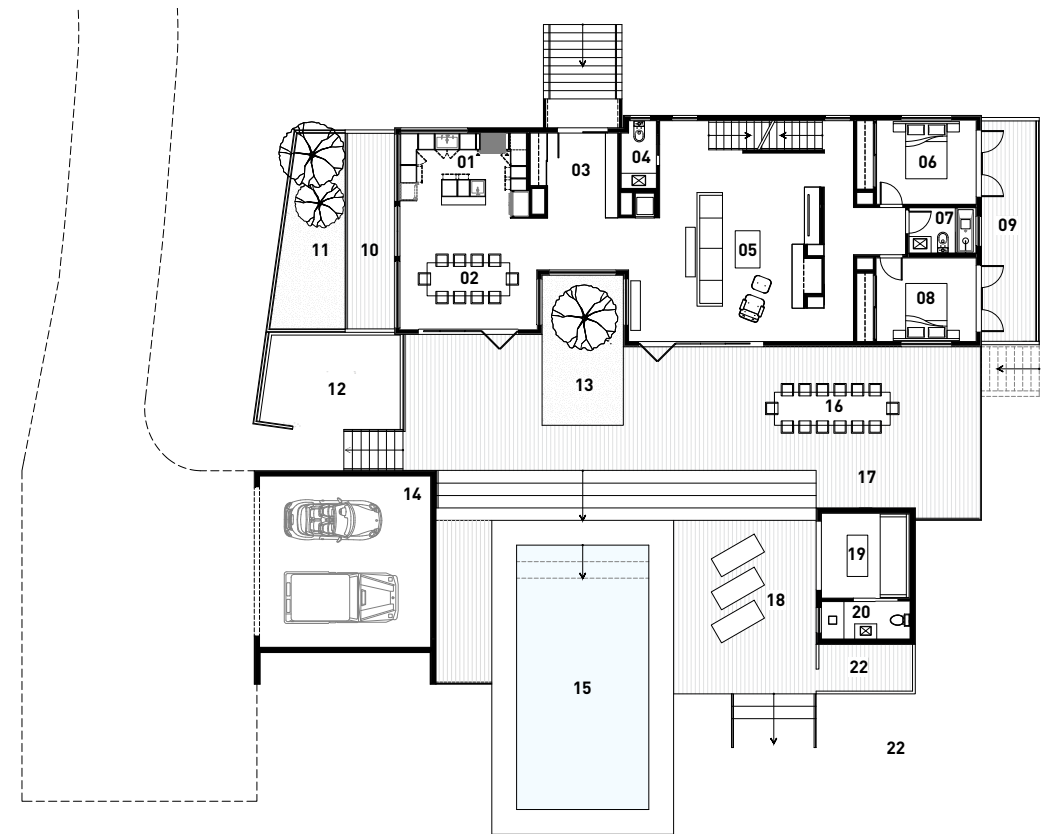






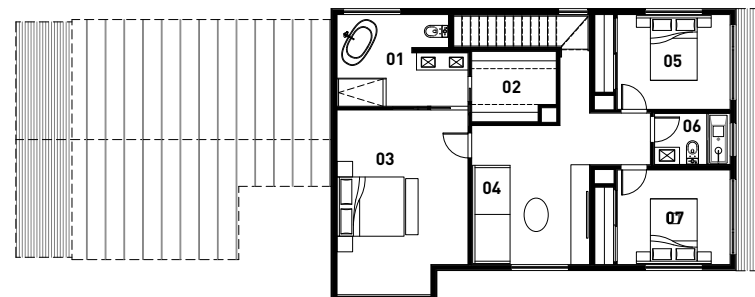
Site Plan

- 01 KITCHEN
- 02 DINING ROOM
- 03 ENTRY
- 04 HALF BATH
- 05 GREAT ROOM
- 06 BEDROOM NO.1
- 07 FULL BATH
- 08 BEDROOM NO.2
- 09 EAST PATIO
- 10 WEST PATIO
- 11 LANDSCAPE GARDEN
- 12 URBAN GARDEN
- 13 ZEN GARDEN
- 14 CARPORT
- 15 POOL
- 16 OUTDOOR DINING
- 17 OUTDOOR KITCHEN
- 18 POOL DECK
- 19 POOL HOUSE
- 20 POOL FULL BATH
- 21 OUTDOOR SHOWER
- 22 FIRE PIT



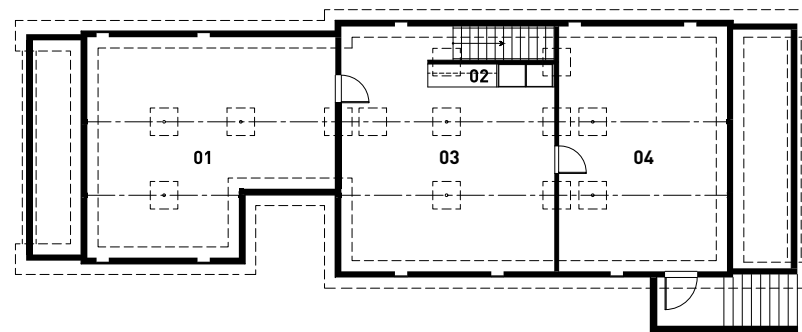
First Floor Plan

- 01 MASTER BATHROOM
- 02 WALK IN CLOSET
- 03 MASTER BEDROOM
- 04 FAMILY ROOM
- 05 BEDROOM NO.3
- 06 FULL BATH
- 07 BEDROOM NO.4

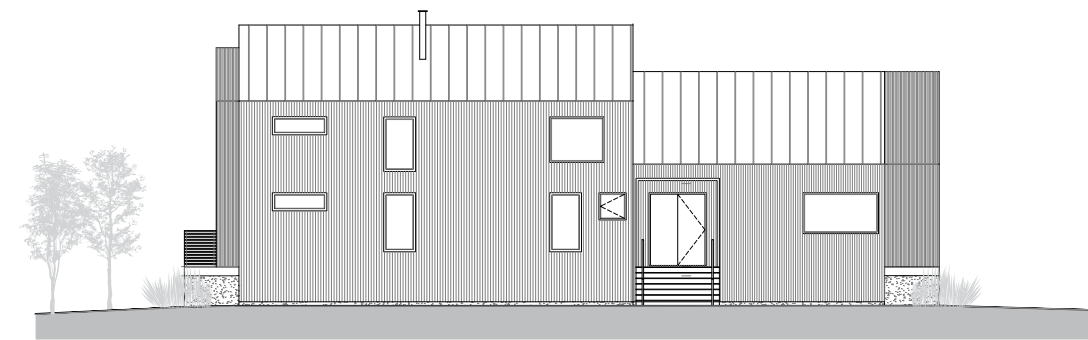


Second Floor Plan

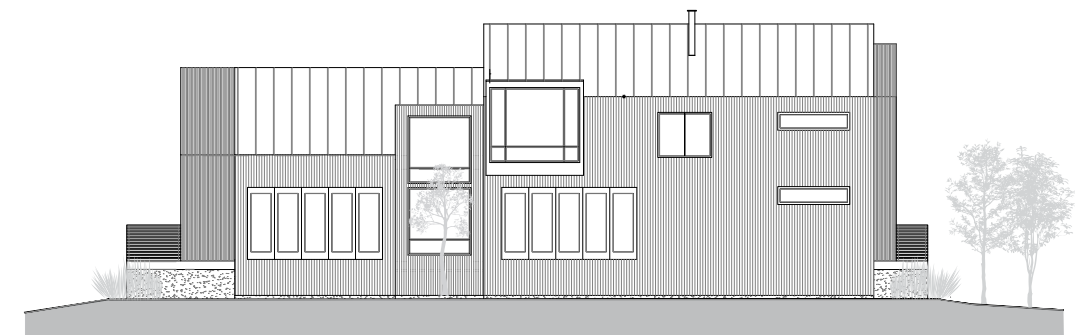
- 01 MECHANICAL ROOM / IT ROOM
- 02 LAUNDRY ROOM
- 03 PLAYROOM
- 04 CONDITIONED STORAGE



Basement Floor Plan



EAST



WEST



SOUTH



NORTH

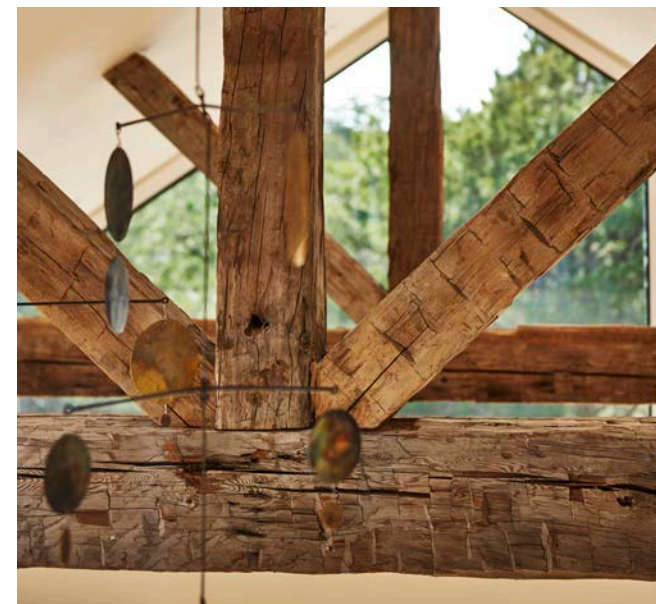
Features

Details

- o Anderson A-Series aluminum exterior / pine wood interior windows & doors
- o Vertical grain grade A Western Red Cedar siding
- o 6" Quartered and rift solid white oak flooring
- o Reclaimed antique barn beams
- o Zung European Walnut kitchen with Blum Blumotion & Hafele hardware
- o Solid brass railing & solid white oak staircase
- o Brizo faucets and fittings
- o Frama Copenhagen lighting fixtures & furniture
- o Gubi Copenhagen lighting fixtures
- o Heat & Glo in-wall gas fireplace
- o Farrow & Ball low-VOC interior paint
- o Fine Paints of Europe low-VOC oil trim paints
- o Buster + Punch Hardware
- o Master & Dynamic Headphones

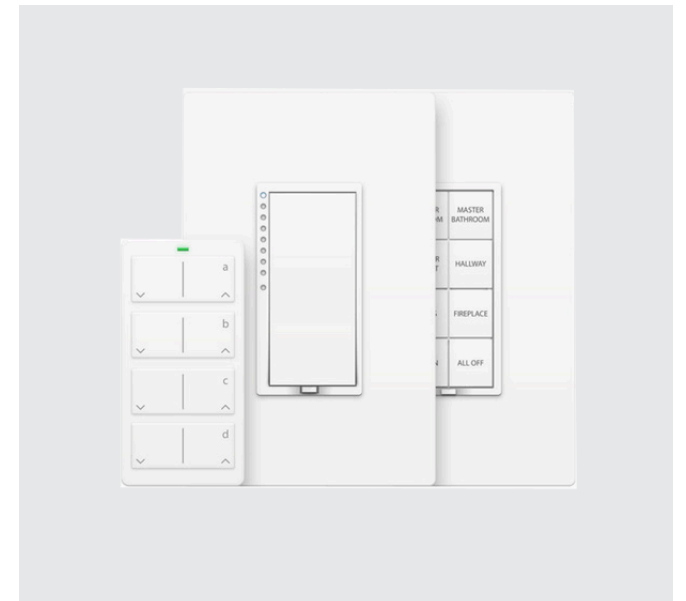
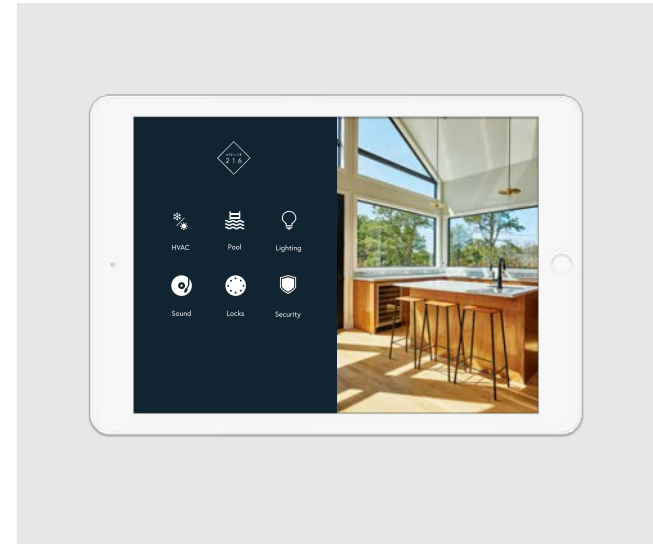
Amenities

- o Smart home integration - All aspects of the residence is controllable by the Atelier 22 iPad, and customizable to your iPhone or Smartphone
- o Audio & Visual, Cameras, Heating & Cooling, Lights, Locks, Pool, Solar System, Security
- o In the event of a hurricane or power-failure the IoT smart home system is connected to the propane generator, ensuring 24/7 automation



Specifications

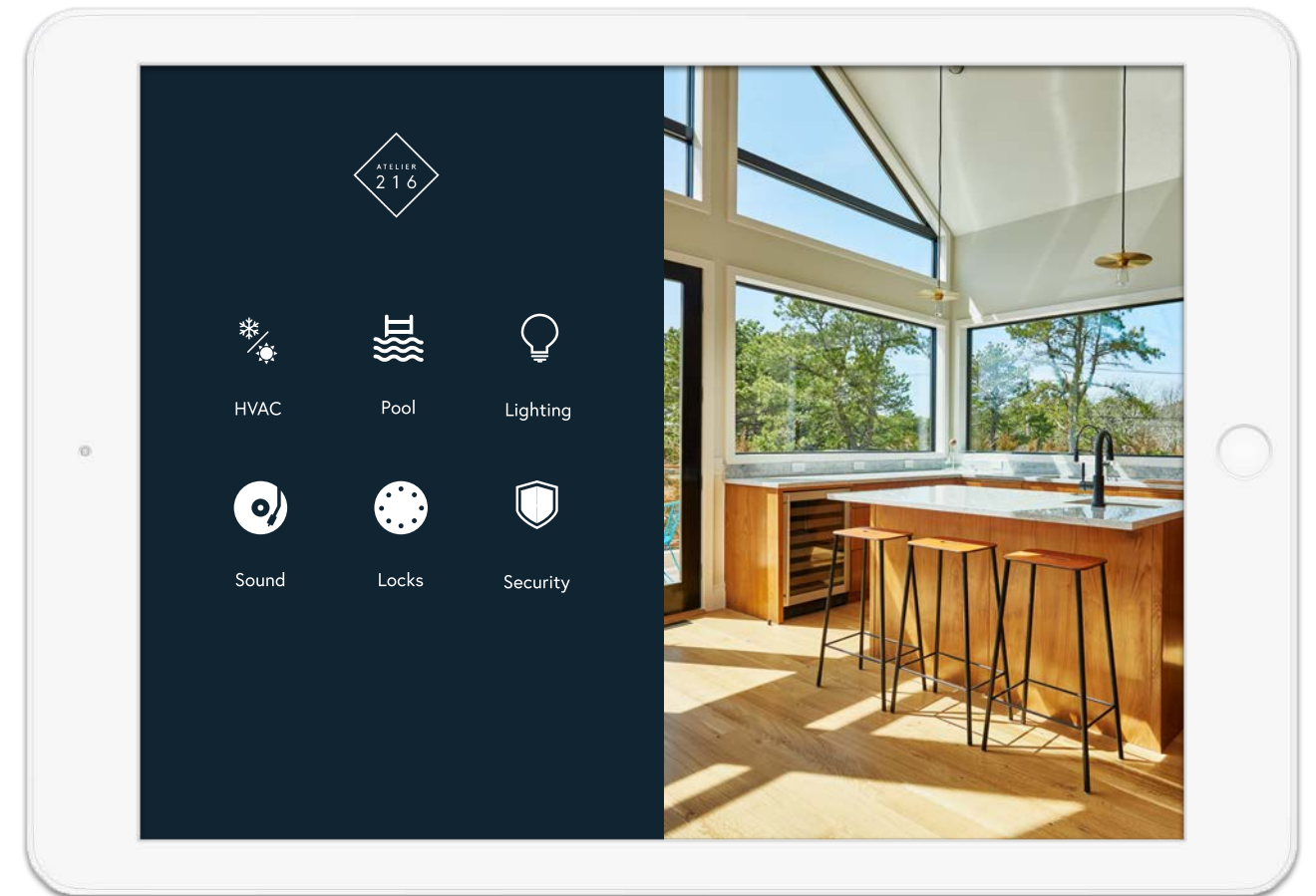
- o Custom home automation system with power outage protection
- o Eco-friendly technology system
- o Personal home server with media center
- o Whole house audio system with Sonos capabilities
- o Professional security system capabilities with remote video surveillance
- o Schalge Sense touchscreen locks
- o Fisher & Paykel appliances
- o LG Front loading washer & dryer MegaCapacity
- o Honeywell smart thermostats with remote temperature control
- o Smart smoke alarm system capabilities
- o Insteon light switches
- o Eco-smart saline pool
- o Jandy smart pool heating
- o 10Kw GE propane fueled back-up generator
- o Duravit sinks, tubs & toilets



iPad Harmonization

The Internet of Things; Definition: IoT is the network of physical objects or "things" embedded with electronics, software, sensors, and connectivity to enable objects to exchange data with the manufacturer, operator and/or other connected devices. The Internet of Things allows objects to be sensed and controlled remotely across existing network infrastructure, creating opportunities for more direct integration between the physical world and computer-based systems, and resulting in improved efficiency, accuracy and economic benefit.

With mindful design integrated into Atelier 216, our team went one step further with the utilization of smart technology. Equipped with simple, integrated software, our custom iPads or iPhones allow the user to control various aspects of the home such as lighting and heating. Welcome to the advent of the smart home era.



Brizo® for Atelier by Studio Zung

Kitchen And Bath Fittings By Brizo®

By combining a refined aesthetic with inventive technologies, Brizo kitchen and bath products seamlessly meld and function and form, providing distinctive designs that deliver exceptional performance while also being water efficient.

Jason Wu For Brizo™ Bath Collection Features

SmartTouch® Technology

SmartTouch Technology activates water flow with a simple touch to the faucet body, spout or handle, bringing a new level of convenience to the kitchen. This functionality makes it easy to activate water flow only when needed, helping reduce water usage and promoting efficiency.

Water-Efficient

Brizo kitchen faucets flow at an efficient 1.8 gallons per minute (6.8 Liters per minute), less than industry standard.

TempAssure® Thermostatic Valving

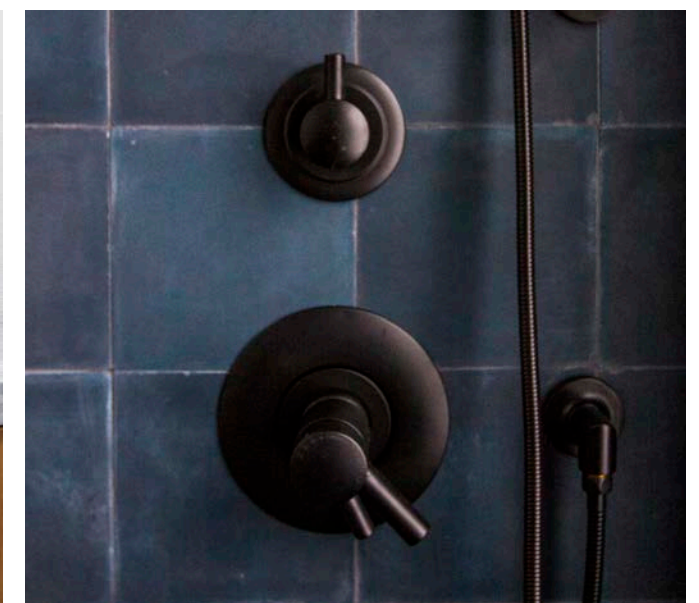
Works like a thermostat in medium-flow showers to measure and monitor the temperature of the water and automatically adjust the water mix to maintain a more precise water temperature.

H₂Okinetic® Technology

By controlling the shape, velocity and thermal dynamics of water, handshowers and showerheads featuring H₂Okinetic Technology create a warmer, more luxurious spray that gives the feeling of a high-flow spray while using less water.

WaterSense® Labeled

Special certification given to taps that meet the water efficiency specifications set forth by the U.S. Environmental Protection Agency, with a flow rate of 1.5 gallons per minute for lavatory taps and 2.0 gallons per minute for showerheads and handshowers. In addition to consuming less water, WaterSense labeled products perform as well or better than less efficient models.



Matera Bed



Design: Sean Yoo / 2007
Material: Solid walnut case frame, bed rails and drawer fronts; walnut veneer over MDF headboard and footboard with solid walnut edging; 0.5" solid ash bed slats.
Finish: Walnut
Dimensions: Queen: 38x64.75x83.25 in Platform 15 in

Adam Bench



Design: Toke Lauridsen
FRAMA Denmark
Material: Steel frame/ Oak seat oiled twice
Finish: Black powder coated RAL color
Dimensions: 460x250x1200-1600 mm

Bestlite BL2 Table Lamp



Design: Robert Dudley Best / 1930
GUBI Denmark
Material: Metal
Finish: Bone Charcoal Black/Brass
Dimensions: 51/84x21x21xØ16 cm

90° Wall Light



Design: FRAMA
FRAMA Denmark
Material: Solid Brass
Finish: Solid Brass
Dimensions: 150x400x150 mm

MS-1



Design: Tobias Tøstesen
FRAMA Denmark
Material: Black Powder Coated Aluminum, Mirror, Black Rubber
Finish: Painted Black
Dimensions: 400x700 x500x8 mm

9.5° Chair



Design: B°Fex / 2009
FRAMA Denmark
Material: Ash
Finish: Painted Black
Dimensions: 450x400x850 mm

Grossman Cobra Wall Lamp



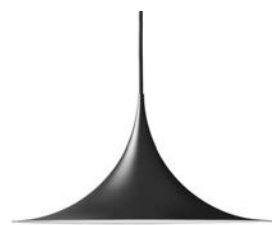
Design: Greta M. Grossman / 1950
GUBI Denmark
Material: Metal
Finish: Jet Black
Dimensions: 333x144xØ168 mm

Circle Shade



Design: FRAMA
FRAMA Denmark
Material: Brass, Textile Cord
Finish: Brass
Dimensions: Ø 250 mm

Semi Pendant Ø60 cm



Design: Bonderup & Thorup / 1968
GUBI Denmark
Material: Metal
Finish: Painted Matte Black
Dimensions: Ø60 cm

George Nelson Bubble Lamp



Design: Saucer Lamp by George Nelson
Material: Plastic, Steel
Dimensions: 9.5x25 in

Bestlite BL7 Wall Lamp



Design: Robert Dudley Best / 1930
GUBI Denmark
Material: Metal
Finish: Bone China/Brass
Dimensions: 47/80xØ16 cm

E27 Wall Light



Design: FRAMA
FRAMA Denmark
Material: Copper, Textile Cord
Finish: Copper
Dimensions: Ø 400 mm

Collector's Art

The art works presented for view [and purchase] are tailored to highlight the unique potential of the living space of each Atelier. Crowning the union of architecture and design, they invite the future owner of the estate to take a personal art-journey, indulge in it and make it their own.

Taken from private collections as well as commissioned specifically for the project, they speak about expansion – both visual and conceptual. We invited established and upcoming artists to translate our understanding of the interconnection between thought, objects and life.

Toke Lauridsen



Title: Time Mobile
Year: 2012
Description: Copper, Brass, Zinc
Price: \$7,500.00 / 6,300,00 €

Wade Guyton & Kelley Walker



Title: Untitled (from the series: Guyton/Walker: Empire Strikes Back)
Year: 2006
Description: Silkscreen and digital inkjet print on canvas
Dimensions: 2 paintings 36 x 24 in. 6 paint cans with print
Price: \$170,000.00 / 156,000,00 € (seperately \$90,000.00 / 83,000,00 €)

Rosy Keyser



Title: Untitled
Year: 2008
Description: Enamel, obsidian and sawdust on linen
Dimensions: 76 x 55 in.
Price: \$38,000.00 / 35,000,00 €

Richard Dupont



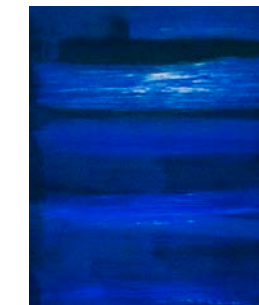
Title: Untitled (Black and White hands touching)
Year: 2005
Description: Ink, collage on paper
Dimensions: 36 x 24 in.
 Unique, Signed and Dated
Price: \$6,500.00 / 6000,00 €

Adrian Gaut



Title: Wilshire Blvd
Year: 2017
Description: Digital Pigment Print on Archival Paper
Dimensions: 44 x 60 in. (110 x 150 cm.)
Price: \$2,250.00 / 2,050,00 €

Jon Pestoni



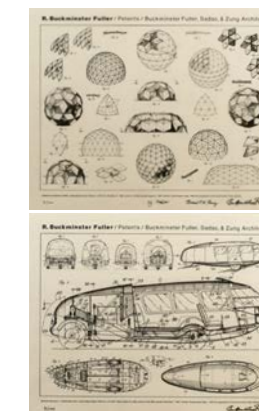
Title: Undercurrent
Year: 2010
Description: Oil on Canvas
Dimensions: 32 x 45 in. (81 x 114 cm)
Price: \$15,000.00 / 13,800,00 €

Buckminster Fuller



Title: Thirty Strut Tensegrity Dome, 1981
Year: 1981
Description: Stainless steel rods and stainless wire tendons. Edition of 10.
Dimensions: 16 in. diameter (41 cm diameter)
Price: \$50,000.00 / 45,500,00 €

Buckminster Fuller



Title: Dymaxion Car and Geodesic Structure; set of two prints, edition of 100, with only 50 for sale, rest on reserve.
Year: 1981
Description: Laser on Mulberry; Kozo paper
Dimensions: 24 x 18 in. (45 x 61 cm)
Price: \$5,000.00 / 4,400,00 €

Studio Zung

Great buildings. Great brands. Great Experiences.

Studio Zung is a multi disciplinary architectural design and branding firm that creates aesthetically beautiful, economically responsible, environmentally sustainable spaces and environments. Named by Architectural Digest in 2015 as one of the top 10 American Architecture firms to watch, Studio Zung has designed and built numerous noteworthy residences and hotels in the Hamptons including Sean MacPherson's Inn and Restaurant, The Crow's Nest, and a private residence in Bridgehampton for the founder of Bumble and Bumble, among others.

At Studio Zung every project begins with a thoughtful and innovative concept and transforms into an intelligent, inspiring, and remarkable human environment. We believe every project should not only be meaningful and beautiful, but also economically responsible and environmentally sustainable.

Every detail, every decision of Atelier by Studio Zung is taken care of by our award winning architects and designers who, after decades of industry experience, understand and epitomize the Studio Zung lifestyle - simple, holistic, and luxurious design. This lifestyle translates into the Atelier by Studio Zung Residences: highly intelligent, integrated, and extraordinarily stylish homes.



Keep in touch

Z Development Group

41 Grand Street
New York, NY 10013
+ 1 212 343 8391
info@zdevelopmentgroup.com

zdevelopmentgroup.com
atelierbystudiozung.com
studiozung.com

@studiozung
#atelierbystudiozung
#atelier216

Photo Credits | Adrian Gaut, Tommy Zung, Talley Carlston, Ty Cole & David Zung



216 Cranberry Hole Road