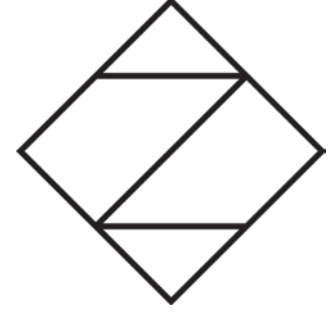


Atelier 22



Amagansett



Atelier by Studio Zung

Atelier by Studio Zung is a collection of intelligently designed, meticulously appointed and artfully curated residences, fully integrated with smart-home details.

For the astute buyer, purposefully designed residences located in the most sought after addresses in New York and the Hamptons. Designer furnished and finely detailed, ready to move in on day one.

Atelier by Studio Zung seamlessly integrates eco-luxury, simple and straightforward design, and an intelligent curation of finishings and technology - all effortlessly combined to create a uniquely elevated lifestyle.

While creativity and innovation are at the core of our design, we pride ourselves on making unique creations for each and every project.

Our award winning architects and designers are highly attentive to every fine detail of design and execution. The end result is a one-of-a-kind Atelier by Studio Zung residence: intelligently integrated, effortlessly luxurious, and functionally stylish homes.

Day One Living

Our distinctive and fully integrated residences are ready to move into from day one; we have taken care of every lifestyle detail so homeowners can enjoy the Atelier by Studio Zung lifestyle and luxury from the first day on.

Artfully Curated

Each residence is fitted and designed with its own thoughtfully chosen finishes, furnishings, artwork, and landscaping to ensure every home and space is personalized and refined.

Sustainable

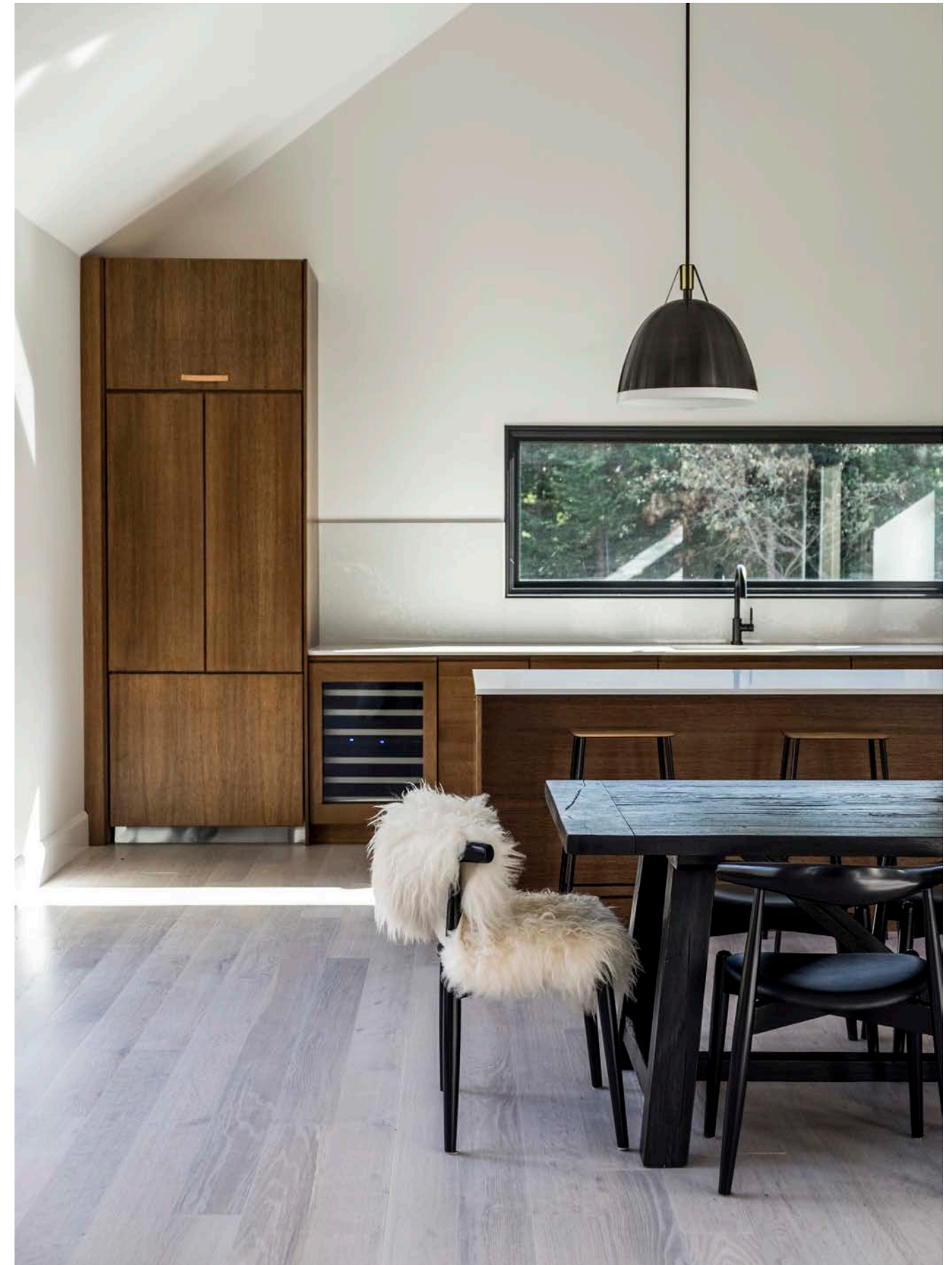
Every Atelier by Studio Zung is built on design that is not only luxurious, but sustainable. By integrating eco-luxury into our simple, straightforward designs and materials we ensure a maximum balance with our holistic and ecological principles.

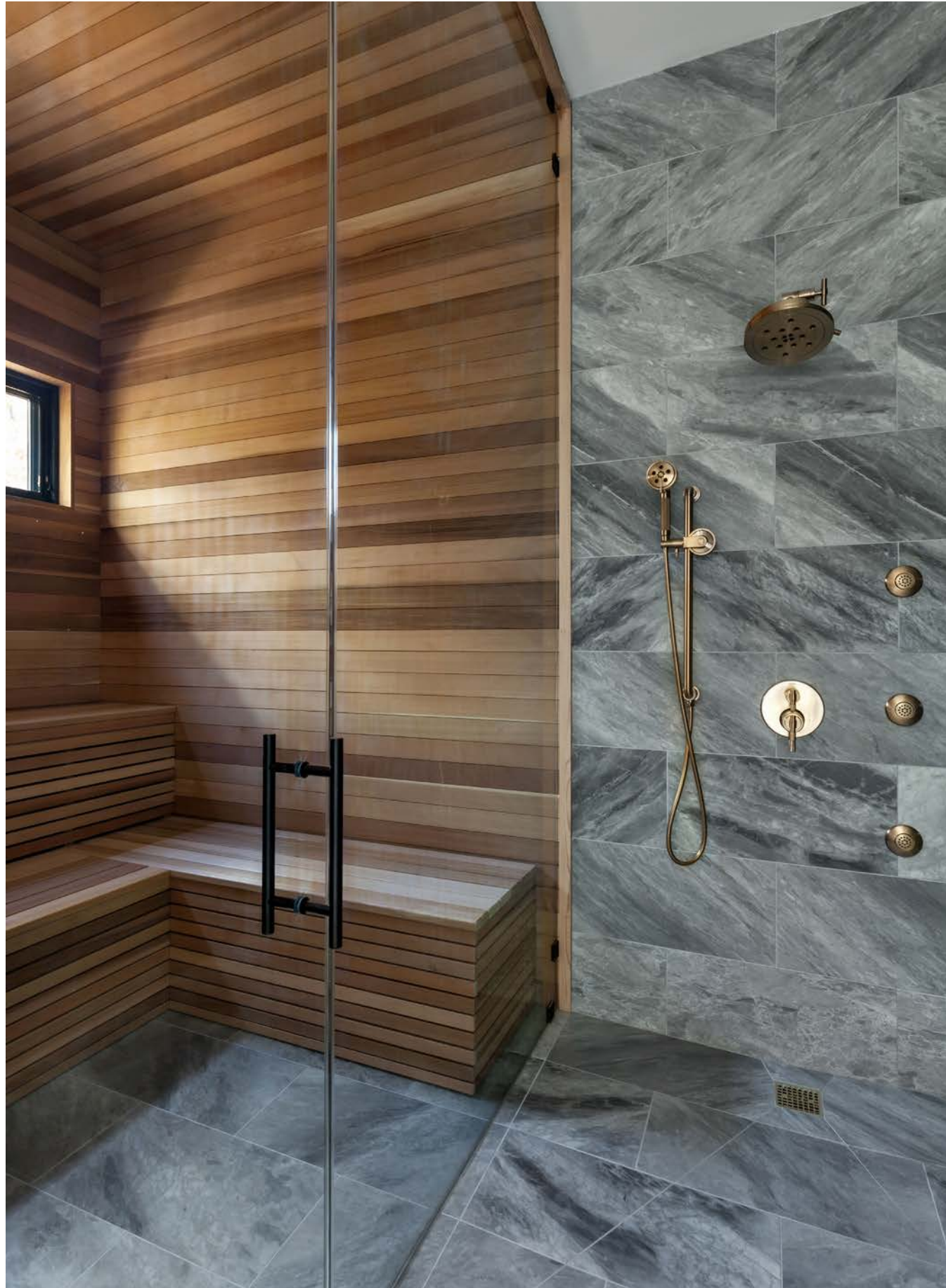
Purposefully Built

Each Atelier by Studio Zung is customized with an individual design and vision that takes into account the unique features of the landscape and surroundings. While we apply the same design aesthetic and principles to each project, no two Atelier by Studio Zung residences are the same.

Simple Luxury

The Ateliers evoke modern and straightforward comfort and elegance with an emphasis on design and enduring amenities.





6

The Heritage of the Hamptons

8

Atelier 22

24

Features

30

Brizo® for Atelier by Studio Zung

36

Studio Zung

38

Keep In Touch

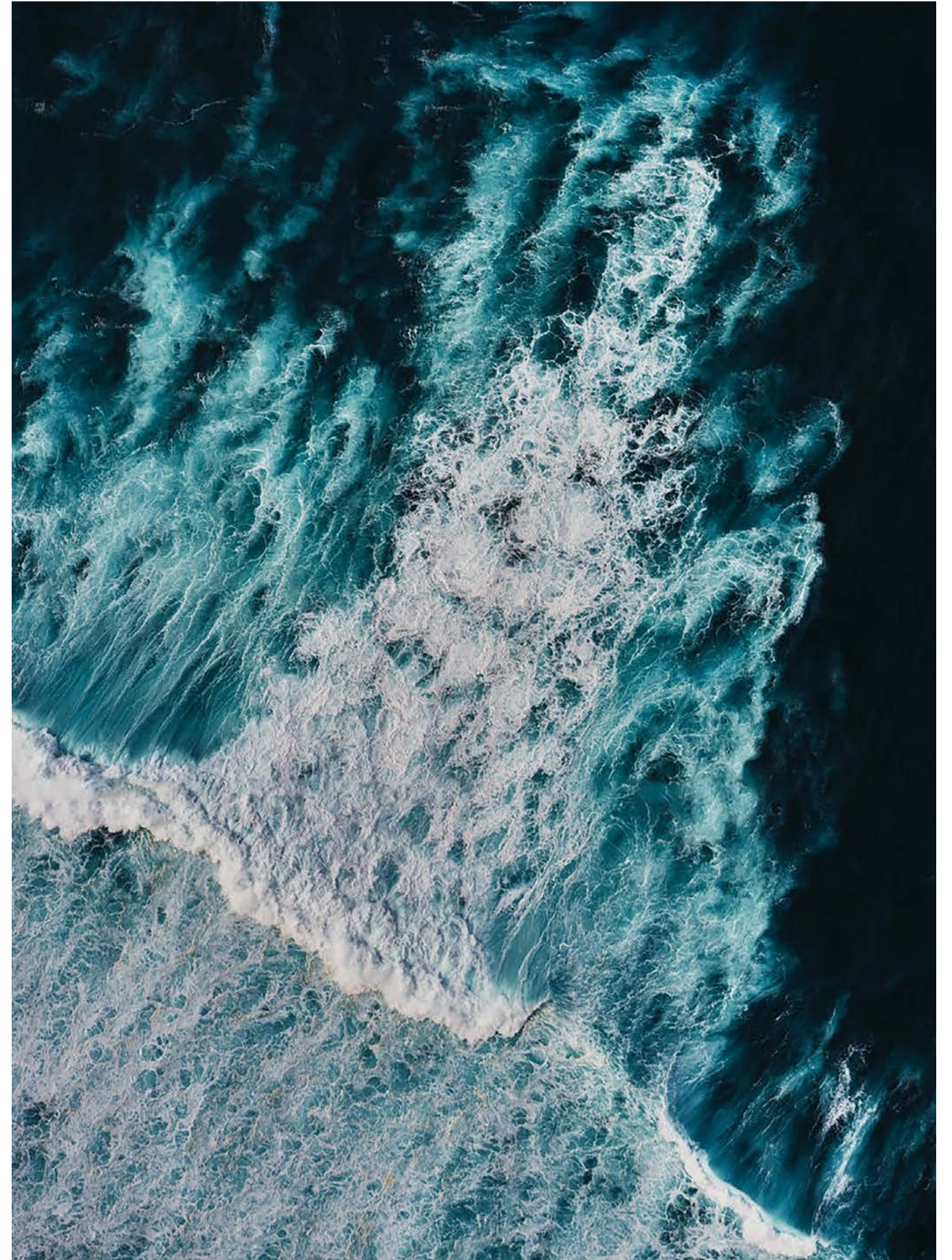
The Heritage of the Hamptons

Amagansett

Located in the town of East Hampton, Amagansett offers residents with the unique charm of The Hamptons while maintaining a more down-to-earth character when compared to its counterparts. The name of the town comes from a Native American word meaning "place of good water." As a popular location during the summer, Amagansett serves as a summer residence for many illustrious people, including Paul McCartney, Scarlett Johansson, Laurie Anderson, Lou Reed, Arthur Miller, Alec Baldwin and Gwyneth Paltrow.

The Hamptons

There is a certain quality of life to The Hamptons. As one of the historical and extravagant summer colonies of the American Northeast, The Hamptons are known to be one of the worlds few coveted summer communities for those looking to have the luxury of living in a beautiful home while enjoying the serene atmosphere of the surrounding community. Home to some of the most prestigious and desirable residential properties in the United States, the Hamptons are distinguished by a large number of retail shops, extensive arts community, marvelous scenery and the majestic Atlantic Ocean.



Atelier 22

Lifestyle

Atelier 22 is an intimate, modern family retreat adjacent to the famed Devon Yacht Club and Napeague Bay, Atelier 22 is a carefully considered, custom-fit, 6,650 square foot which includes a 1,150 square foot finished lower level, seven bedroom, and seven and a half bath residence in Amagansett with a fully furnished elective.

The residence features a wellness spa, custom designed chef's kitchen, pool and pool house, and a permit-ready tennis court all on two acres. The home perfectly juxtaposes public and private spaces by balancing the sprawling surrounding area with a comfortable family sanctuary.

Inspiration

Inspired by traditional barn design and contemporary architecture, Atelier 22 is a modernized barn that is authentic to the Hamptons heritage as well as architecturally sustainable. The design respects the local legacy while instilling the Hamptons with relevant innovation.





The Design

Created by award winning architecture firm, Studio Zung, Atelier 22 is curated to accommodate the needs of the 21st century homeowner by simultaneously integrating design, luxury, and technology. The residence is built with construction integrity combined with lasting luxury finishes.

Active and passive sustainable design coupled with intricate architectural details and native landscaping design ensures that a comprehensive design science has been implemented.

The property features an attached two-car garage, a heated, saline pool, an all-season pool house including a full bath and outdoor shower, and a permit-ready designated area for a Har-Tru tennis court. Atelier 22 features 15' vaulted ceilings with salvaged pine barn beams and a wellness spa featuring steam room, sauna, and shower finished in marble and cedar.

Total SQ Footage
6,650 SQ. FT. / 618 M²

Resident SQ Footage
5,500 SQ. FT. / 511 M²

Lower Level SQ Footage
1,150 SQ. FT. / 107 M²

Pool House SQ Footage
200 SQ. FT. / 18.6 M²

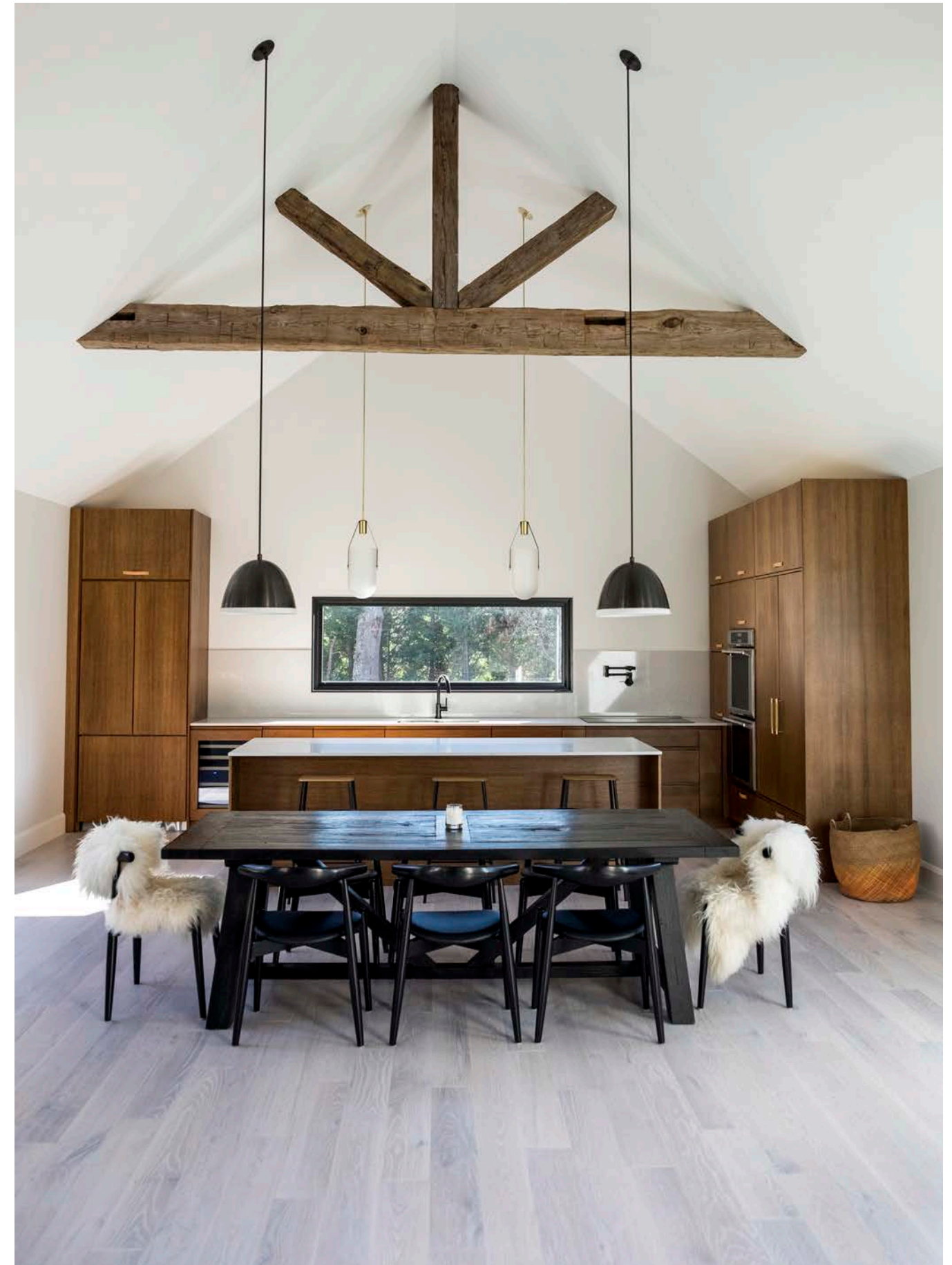
Outdoor Decking
875 SQ. FT. / 81 M²

Outdoor Parrilla Pavilion
360 SQ. FT. / 33 M²

Pool
18 FT x 36 FT / 5.5 M x 11 M

Heated Saline

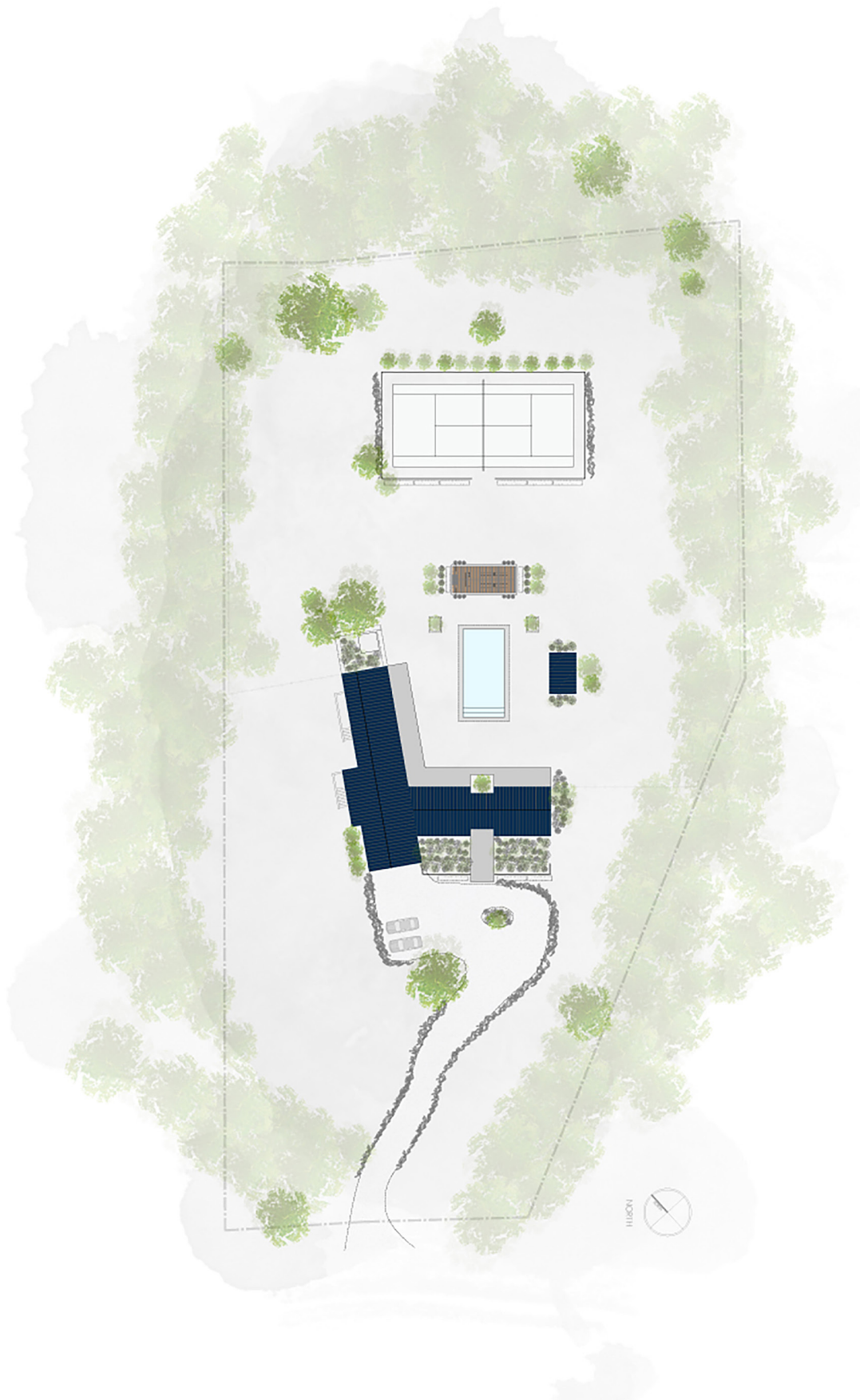
Garage SQ Footage
450 SQ. FT. / 42 M²





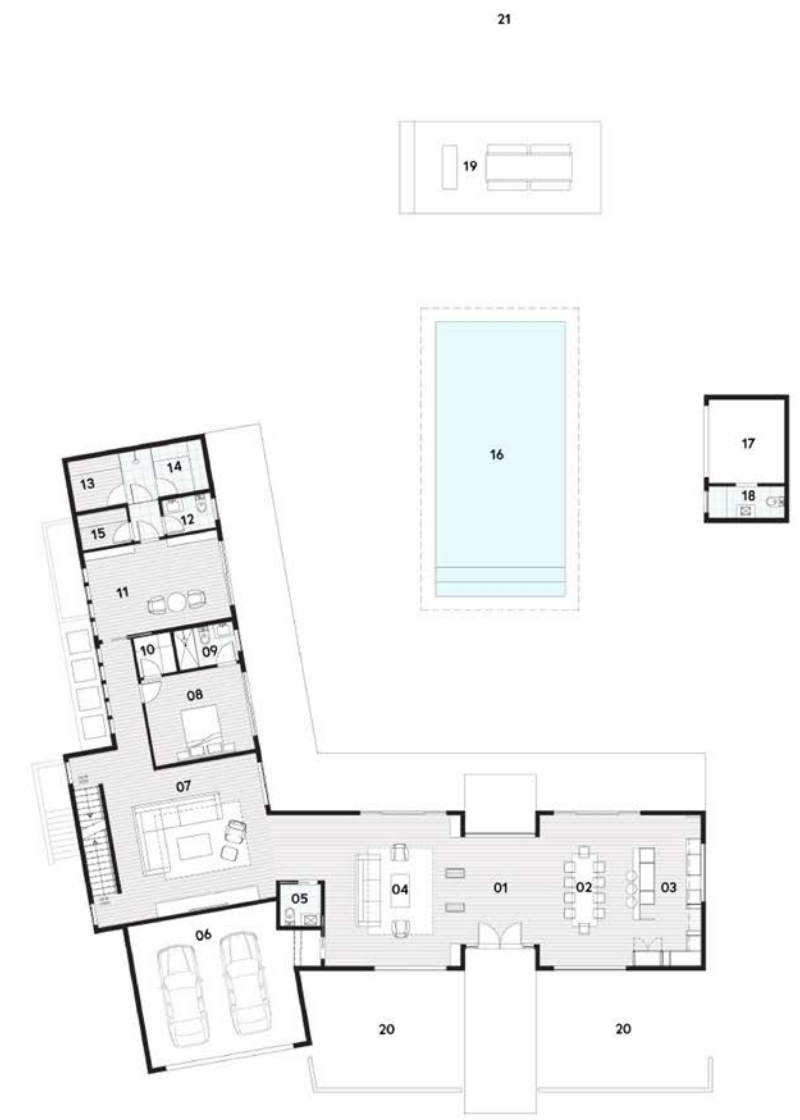






Site Plan

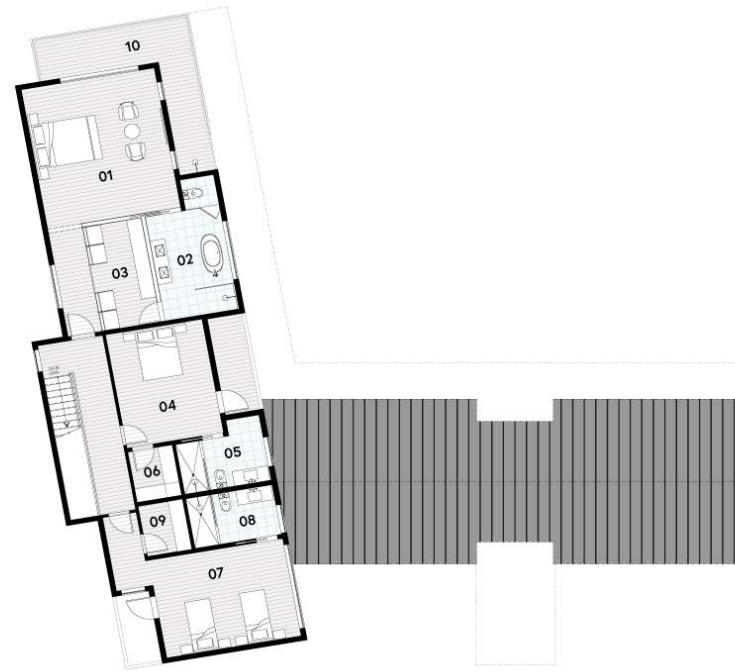
- 01 ENTRY
- 02 DINING ROOM
- 03 KITCHEN
- 04 GREAT ROOM
- 05 HALF BATH
- 06 TWO CAR GARAGE
- 07 FAMILY ROOM
- 08 BEDROOM 3
- 09 FULL BATH
- 10 WALK-IN CLOSET
- 11 LIBRARY/OFFICE
- 12 FULL BATH
- 13 SAUNA ROOM
- 14 STEAM ROOM
- 15 WALK-IN CLOSET
- 16 POOL
- 17 ALL SEASON POOL HOUSE
- 18 FULL BATH
- 19 OUTDOOR PARRILLA PAVILION
- 20 INTERIOR GARDEN
- 21 TENNIS COURT



First Floor Plan

- 01 MASTER BEDROOM SUITE
- 02 MASTER BATH
- 03 MASTER WALK-IN CLOSET
- 04 BEDROOM 4
- 05 FULL BATH
- 06 WALK-IN CLOSET
- 07 BEDROOM 5
- 08 FULL BATH
- 09 WALK-IN CLOSET
- 10 MASTER SUITE DECK

Second Floor Plan



NORTHEAST



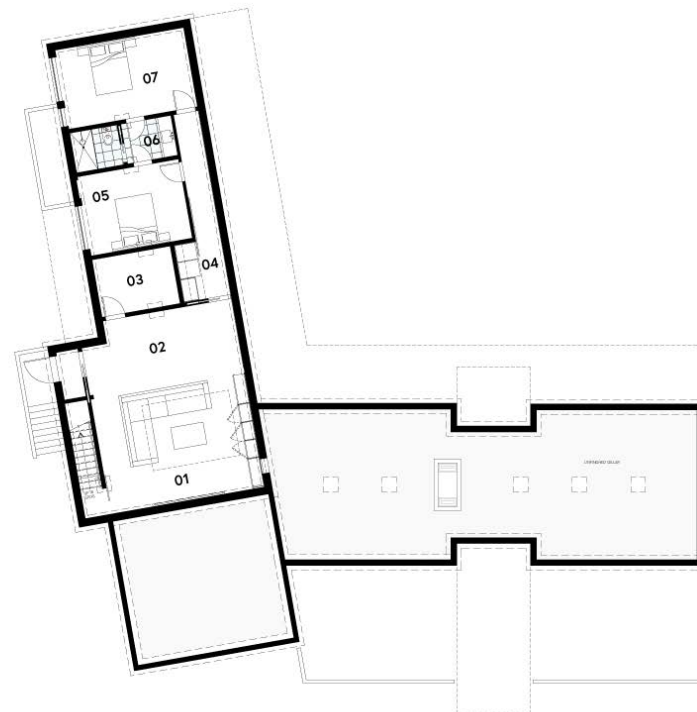
NORTHWEST



SOUTHEAST

- 01 THEATRE
- 02 YOGA/EXERCISE/PLAY ROOM
- 03 MECHANICAL ROOM
- 04 LAUNDRY ROOM
- 05 BEDROOM 1
- 06 FULL BATH
- 07 BEDROOM 2

Lower Level Plan



SOUTHWEST

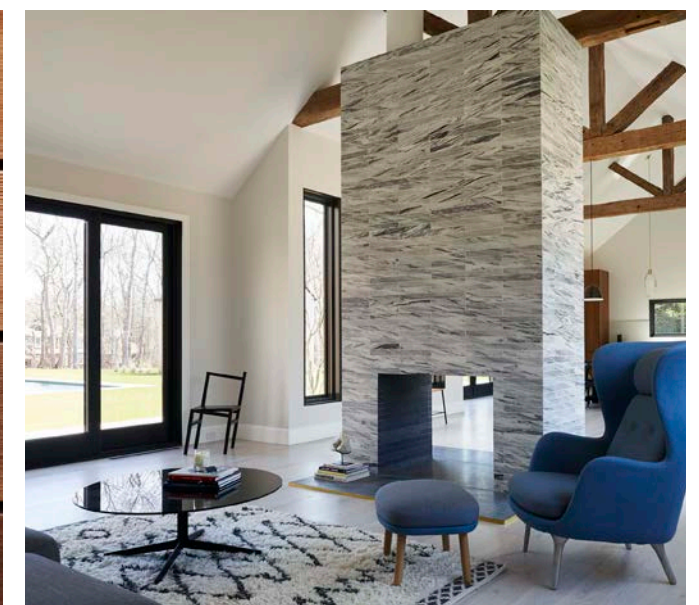
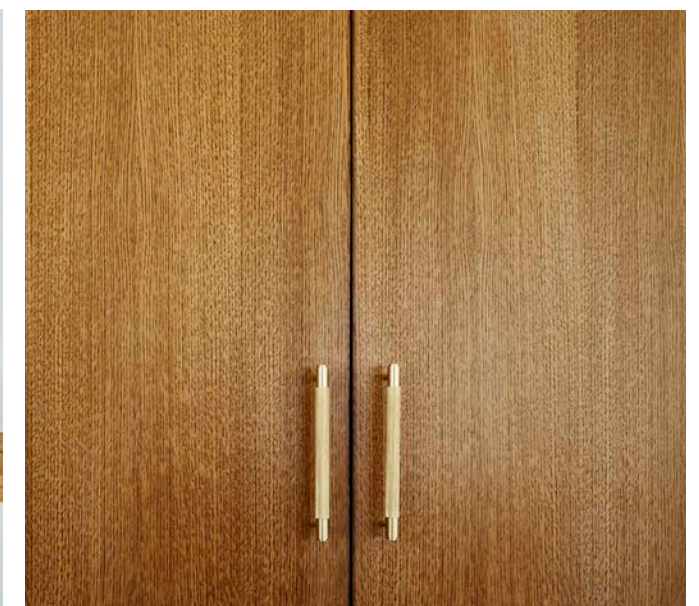
Features

Details

- o Anderson A-Series aluminum exterior / pine wood interior windows & doors
- o Vertical grain grade A Western Red Cedar siding
- o 6" Quartered and rift solid, engineered white oak flooring
- o Reclaimed antique barn beams
- o Zung Fumed Oak kitchen with Blum Blumotion & Hafele hardware
- o Solid brass railing & solid white oak staircase
- o Brizo faucets and fittings
- o Allied Maker lighting fixtures
- o Through wood fireplace
- o Farrow & Ball low-VOC interior paint
- o Buster + Punch Hardware

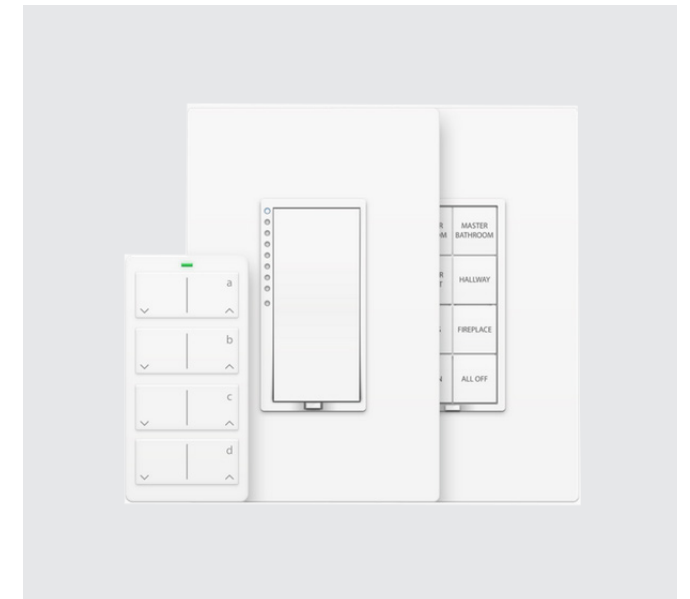
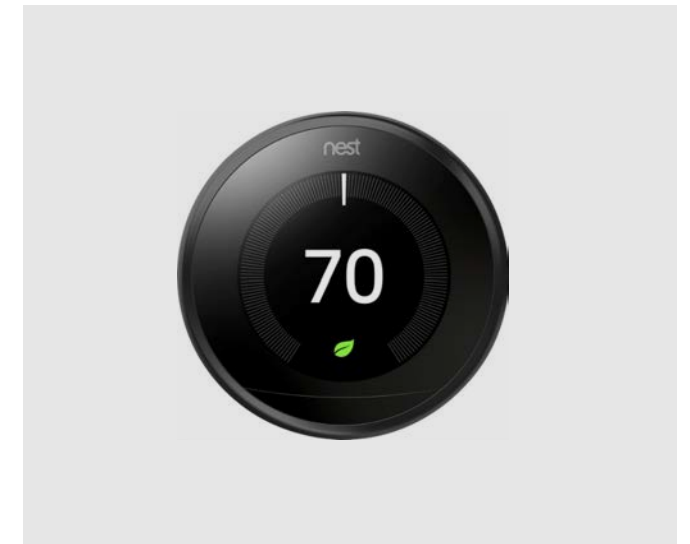
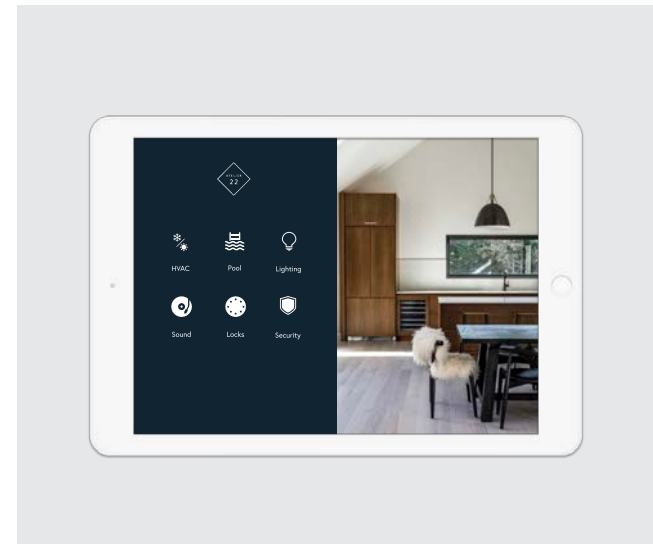
Amenities

- o Smart home integration - All aspects of the residence is controllable by the Atelier 22 iPad, and customizable to your iPhone or Smartphone
- o Audio & Visual, Cameras, Heating & Cooling, Lights, Locks, Pool, Solar System, Security
- o In the event of a hurricane or power-failure the IoT smart home system is connected to the propane generator, ensuring 24/7 automation



Specifications

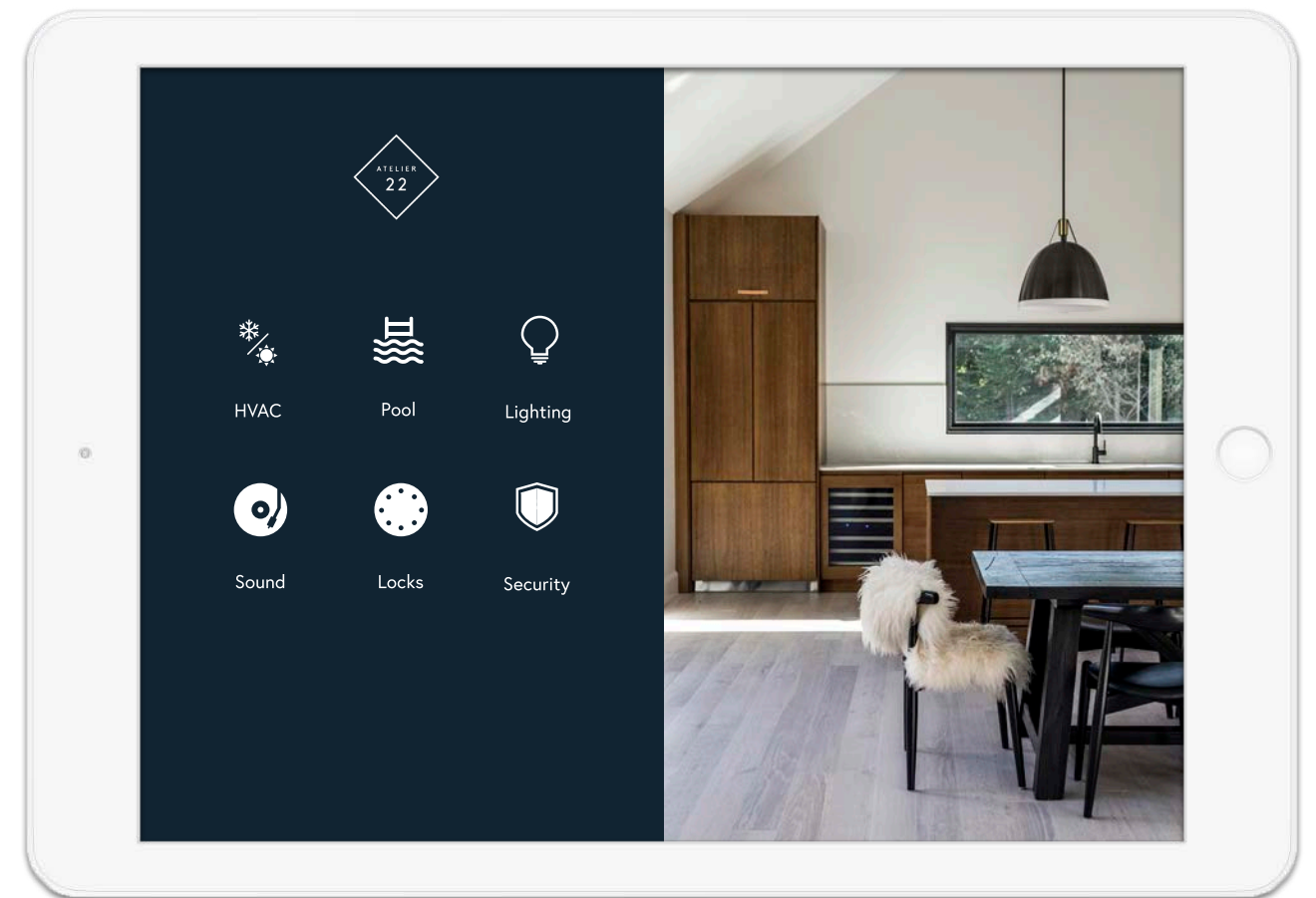
- o Custom home automation system with power outage protection
- o Eco-friendly technology system
- o Personal home server with media center
- o Whole house audio system with Sonos capabilities
- o Professional security system capabilities with remote video surveillance
- o Schalge Sense touchscreen locks
- o Fisher & Paykel appliances
- o LG Front loading washer & dryer MegaCapacity
- o Honeywell smart thermostats with remote temperature control
- o Smart smoke alarm system capabilities
- o Insteon light switches
- o Eco-smart saline pool
- o Jandy smart pool heating
- o 10Kw GE propane fueled back-up generator
- o Duravit sinks, tubs & toilets



iPad Harmonization

The Internet of Things; Definition: IoT is the network of physical objects or "things" embedded with electronics, software, sensors, and connectivity to enable objects to exchange data with the manufacturer, operator and/or other connected devices. The Internet of Things allows objects to be sensed and controlled remotely across existing network infrastructure, creating opportunities for more direct integration between the physical world and computer-based systems, and resulting in improved efficiency, accuracy and economic benefit.

With mindful design integrated into Atelier 22, our team went one step further with the utilization of smart technology. Equipped with simple, integrated software, our custom iPads or iPhones allow the user to control various aspects of the home such as lighting and heating. Welcome to the advent of the smart home era.



Brizo® for Atelier by Studio Zung

Consulting Design by Tommy Zung

Tommy Zung was the consulting designer for the Brizo Litze collection presenting storyboards; design direction; fixture design language; and fixture detailing that was ultimately the driving and consulting design of the Litze Collection.

SOLNA® Kitchen Collection Features

Articulating Kitchen Faucet

Inspired by the definitive functionality of an architect's lamp, this clever twist on the classic pull-down faucet allows the spray wand to be positioned virtually anywhere needed for the task at hand. For maximum flexibility, the wand can also be easily undocked.

SmartTouch® Technology

SmartTouch Technology activates water flow with a simple touch to the faucet body, spout or handle, bringing a new level of convenience to the kitchen. This functionality makes it easy to activate water flow only when needed, helping reduce water usage and promoting efficiency.

Water-Efficient

Brizo kitchen faucets flow at an efficient 1.8 gallons per minute (6.8 Liters per minute), less than industry standard.

Kitchen And Bath Fittings By Brizo®

By combining a refined aesthetic with inventive technologies, Brizo kitchen and bath products seamlessly meld and function and form, providing distinctive designs that deliver exceptional performance while also being water efficient.

LITZE™ Bath Collection Features

TempAssure® Thermostatic Valving

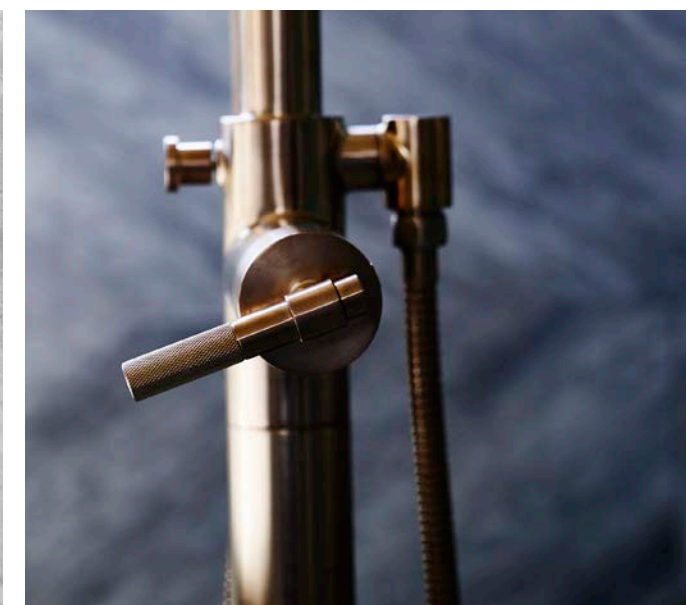
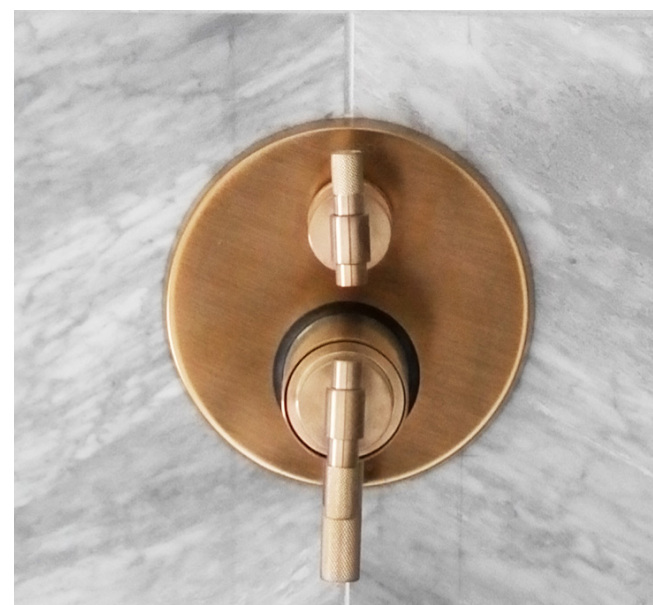
Works like a thermostat in medium-flow showers to measure and monitor the temperature of the water and automatically adjust the water mix to maintain a more precise water temperature.

H₂Okinetic® Technology

By controlling the shape, velocity and thermal dynamics of water, handshowers and showerheads featuring H₂Okinetic Technology create a warmer, more luxurious spray that gives the feeling of a high-flow spray while using less water.

WaterSense® Labeled

Special certification given to taps that meet the water efficiency specifications set forth by the U.S. Environmental Protection Agency, with a flow rate of 1.5 gallons per minute for lavatory taps and 2.0 gallons per minute for showerheads and handshowers. In addition to consuming less water, WaterSense labeled products perform as well or better than less efficient models.

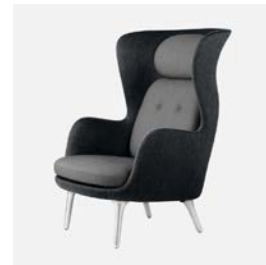


Favn™ Sofa



Design: Jamie Hayon
Material: Brushed aluminium base, Shell Steelcut, Canvas 614, and Divina MD 613 upholstery
Color: Light Pink
Dimensions: H 34.6" x W 87" x D 36.6"

Ro™ Lounge Chair



Design: Jamie Hayon
Material: Brushed aluminium base, Steelcut, Canvas, and Divina MD upholstery
Color: Dark Grey
Dimensions: W 31.5" x D 38"

Adam Stool



Design: Toke Lauridsen
FRAMA Denmark / 2012
Material: Steel frame / oak seat oiled twice
Finish: Black powder coated
Dimensions: H 50 cm
W 35 cm d 25 cm

Adam Bench



Design: Toke Lauridsen
FRAMA Denmark
Manufactured: Lithuania
Material: Steel frame / oak seat oiled twice
Finish: Black powder coated RAL color
Dimensions: H 460 x D 250 x L 1200-1600 mm

PK80™ Daybed



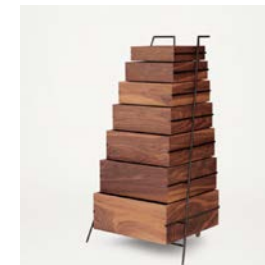
Design: Poul Kjaerholm
Material: Walnut elegance leather / satinpolished stainless steel
Dimensions: H 12" x W 75" x D 31.5"

PK61™ Table



Design: Poul Kjaerholm / 1956
Material: Black petra marble / matte chrome springsteel
Dimensions: H 32 cm L 80 cm W 80 cm

Sutoa Drawers



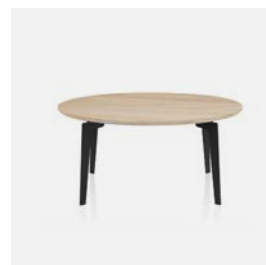
Design: Keiji Ashizawa
FRAMA Denmark / 2011
Material: Steel frame / solid walnut oiled twice
Finish: Black powder coated steel with dark grey laminate interior
Dimensions: H 1165 mm W 670 mm D 530 mm

9.5° Chair



Design: B°Fex / 2009
FRAMA Denmark
Manufactured: Sweden
Material: Ash
Finish: Painted Black
Dimensions: 450 x 400 x 850 mm

Join™ Coffee Table



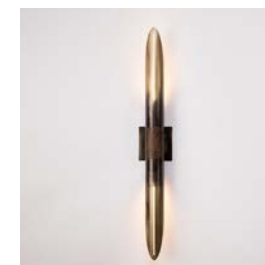
Design: Fritz Hansen
Material: Oak/ Black Powder Coated Steel
Finish: Clear lacquer
Dimensions: H 14.5" x L:30" x W 18.5"

PK22™ Lounge Chair



Design: Poul Kjaerholm
Material: Walnut elegance leather / matte chrome springsteel
Dimensions: 63 cm x 63 cm

Voyager Sconce



Design: Allied Maker
Manufactured: USA
Material: Brass cylinder with milled line on both sides / cast brass canopy
Finish: Gradient
Dimensions: H33" W 3.875 x 5"

Court Sconce



Design: Allied Maker
Manufactured: USA
Material: Brass cylinder with milled line on both sides / cast brass canopy
Finish: Gradient
Dimensions: H 13" W 3" / 4.5" Ø

Toke Lauridsen



Title: Time Mobile
Year: 2012
Description: Copper, Brass, Zinc
Price: \$7,500.00/ 6,300,00 €

Wade Guyton & Kelley Walker



Title: Untitled (from the series: Guyton/Walker: Empire Strikes Back)
Year: 2006
Description: Silkscreen and digital inkjet print on canvas
Dimensions: 2 paintings 36 x 24 in. 6 paint cans with print
Price: \$170,000.00 / 156,000,00 € (seperately \$90,000.00 / 83,000,00 €)

Rosy Keyser



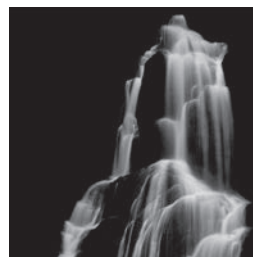
Title: Untitled
Year: 2008
Description: Enamel, obsidian and sawdust on linen
Dimensions: 76 x 55 in.
Price: \$38,000.00 / 35,000,00 €

Richard Dupont



Title: Untitled (Black and White hands touching)
Year: 2005
Description: Ink, collage on paper
Dimensions: 36 x 24 in.
Unique, Signed and Dated
Price: \$6,500.00 / 6000,00 €

Simon Chaput



Title: Waterfall 16
Year: 2009
Description: Silver gelatin fiber base print mounted on mudeum board and DiBond. Edition of 10.
Dimensions: 40 x 60 in (101 x 152 cm)
Price: \$17,000.00 / 14,400,00 €

Samantha Keeley Smith



Title: Deluge
Year: 2012
Description: Oil and varnish on canvas
Dimensions: 60 x 64 in.
Price: \$18,500.00 / 16,500,00 €

Collector's Art

The art works presented for view [and purchase] are tailored to highlight the unique potential of the living space of each Atelier. Crowning the union of architecture and design, they invite the future owner of the estate to take a personal art-journey, indulge in it and make it their own.

Taken from private collections as well as commissioned specifically for the project, they speak about expansion – both visual and conceptual. We invited established and upcoming artists to translate our understanding of the interconnection between thought, objects and life.

Buckminster Fuller



Title: Thirty Strut Tensegrity Dome, 1981
Year: 1981
Description: Stainless steel rods and stainless wire tendons. Edition of 10.
Dimensions: 16 in. diameter (41 cm diameter)
Price: \$50,000.00 / 45,500,00 €

Sydney Albertini



Title: Vector Equilibrium Jitterbug Duo, 1980/2008 Editions
Year: 1980
Description: Stainless steel rods and stainless steel hinges. Edition of 10.
Dimensions: 21 in. diameter (54 cm diameter)
Price: \$15,000.00 / 13,500,00 €

Studio Zung

Great buildings. Great brands. Great Experiences.

Studio Zung is a multi disciplinary architectural design and branding firm that creates aesthetically beautiful, economically responsible, environmentally sustainable spaces and environments. Named by Architectural Digest in 2015 as one of the top 10 American Architecture firms to watch, Studio Zung has designed and built numerous noteworthy residences and hotels in the Hamptons including Sean MacPherson's Inn and Restaurant, The Crow's Nest, and a private residence in Bridgehampton for the founder of Bumble and Bumble, among others.

At Studio Zung every project begins with a thoughtful and innovative concept and transforms into an intelligent, inspiring, and remarkable human environment. We believe every project should not only be meaningful and beautiful, but also economically responsible and environmentally sustainable.

Every detail, every decision of Atelier by Studio Zung is taken care of by our award winning architects and designers who, after decades of industry experience, understand and epitomize the Studio Zung lifestyle - simple, holistic, and luxurious design. This lifestyle translates into the Atelier by Studio Zung Residences: highly intelligent, integrated, and extraordinarily stylish homes.



Keep in touch

Z Development Group

41 Grand Street
New York, NY 10013
+ 1 212 343 8391
info@zdevelopmentgroup.com

zdevelopmentgroup.com
atelierbystudiozung.com
studiozung.com

@studiozung
#atelierbystudiozung
#atelier22

Photo Credits | Adrian Gaut, Tommy Zung & Talley Carlston



22 Pepperidge Lane