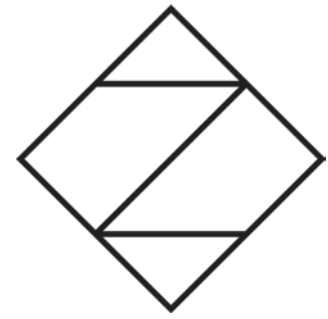


Atelier 96



Amagansett



Atelier by Studio Zung

Atelier by Studio Zung is a collection of intelligently designed, meticulously appointed and artfully curated residences, fully integrated with smart-home details.

For the astute buyer, purposefully designed residences located in the most sought after addresses in New York and the Hamptons. Designer furnished and finely detailed, ready to move in on day one.

Atelier by Studio Zung seamlessly integrates eco-luxury, simple and straightforward design, and an intelligent curation of finishings and technology - all effortlessly combined to create a uniquely elevated lifestyle.

While creativity and innovation are at the core of our design, we pride ourselves on making unique creations for each and every project.

Our award winning architects and designers are highly attentive to every fine detail of design and execution. The end result is a one-of-a-kind Atelier by Studio Zung residence: intelligently integrated, effortlessly luxurious, and functionally stylish homes.

Day One Living

Our distinctive and fully integrated residences are ready to move into from day one; we have taken care of every lifestyle detail so homeowners can enjoy the Atelier by Studio Zung lifestyle and luxury from the first day on.

Artfully Curated

Each residence is fitted and designed with its own thoughtfully chosen finishes, furnishings, artwork, and landscaping to ensure every home and space is personalized and refined.

Sustainable

Every Atelier by Studio Zung is built on design that is not only luxurious, but sustainable. By integrating eco-luxury into our simple, straightforward designs and materials we ensure a maximum balance with our holistic and ecological principles.

Purposefully Built

Each Atelier by Studio Zung is customized with an individual design and vision that takes into account the unique features of the landscape and surroundings. While we apply the same design aesthetic and principles to each project, no two Atelier by Studio Zung residences are the same.

Simple Luxury

The Ateliers evoke modern and straightforward comfort and elegance with an emphasis on design and enduring amenities.





6	The Heritage of the Hamptons
8	Atelier 96
18	Plans
26	Specifications
28	Exterior Features
32	Interior Features
36	Kitchen Features
40	Master Bedroom Suite Features
42	Master Bathroom Features
46	Bathroom Features
50	Brizo® for Atelier by Studio Zung
52	Furniture Electives
54	Collector's Art
56	Studio Zung
58	Terms and Definitions
60	New Construction Warranty
64	Keep In Touch

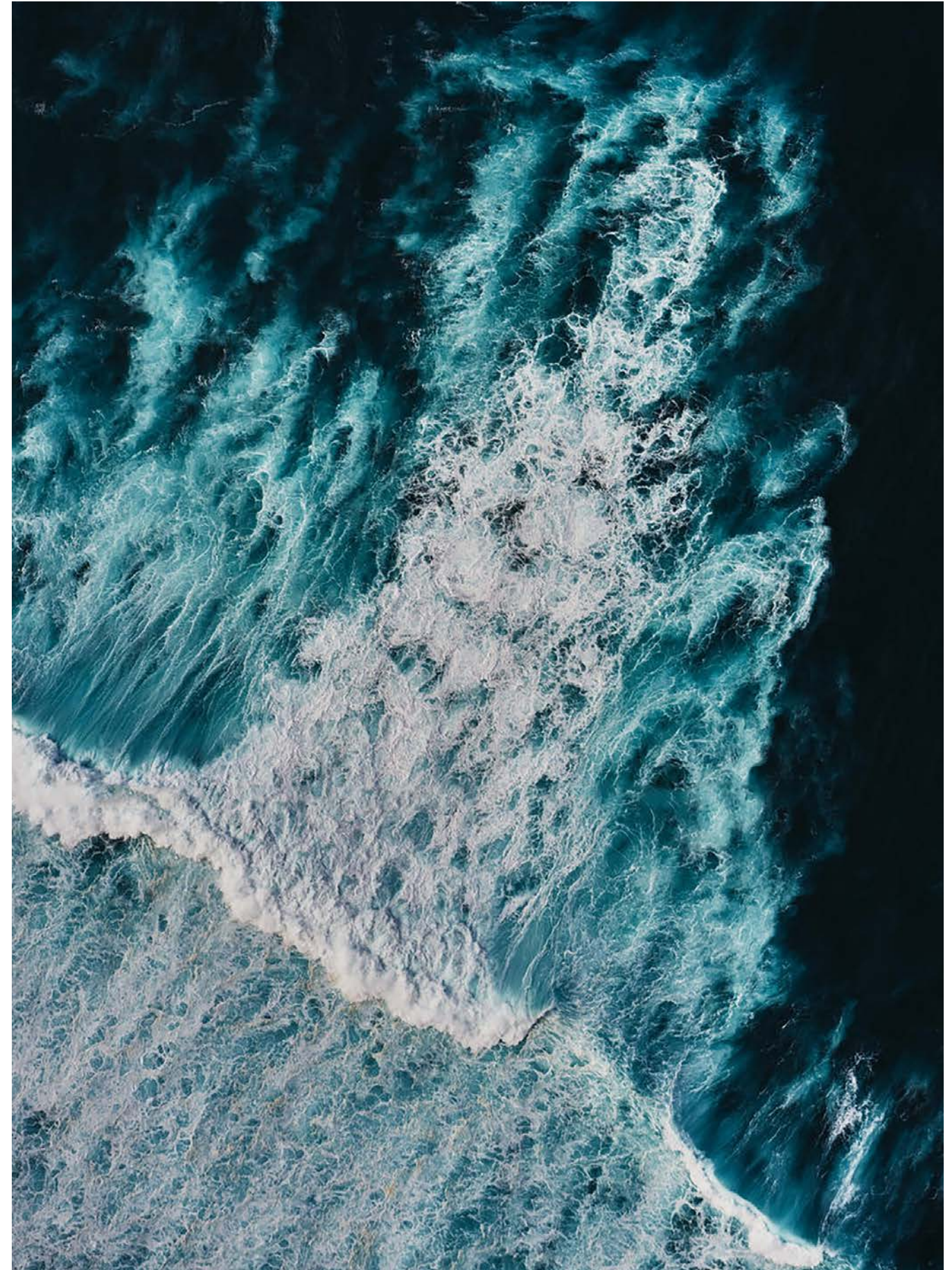
The Heritage of the Hamptons

Amagansett

Located in the town of East Hampton, Amagansett offers residents with the unique charm of The Hamptons while maintaining a more down-to-earth character when compared to its counterparts. The name of the town comes from a Native American word meaning "place of good water." As a popular location during the summer, Amagansett serves as a summer residence for many illustrious people, including Paul McCartney, Scarlett Johansson, Laurie Anderson, Lou Reed, Arthur Miller, Alec Baldwin and Gwyneth Paltrow.

The Hamptons

There is a certain quality of life to the Hamptons. As one of the historical and extravagant summer colonies of the American Northeast, the Hamptons are known to be one of the worlds few coveted summer communities for those looking to have the luxury of living in a beautiful home while enjoying the serene atmosphere of the surrounding community. Home to some of the most prestigious and desirable residential properties in the United States, the Hamptons are distinguished by a large number of retail shops, extensive arts community, marvelous scenery and the majestic Atlantic Ocean.



Atelier 96

Lifestyle

Atelier 96 is a carefully considered; custom-fit; 8,600 habitable square foot; 5,545 interior liveable square foot, six bedroom; and five and a half bath residence in Amagansett with a fully furnished elective. The residence features a custom designed chef's kitchen, 2-car garage, and a heated pool with a rooftop deck lounge and ocean view decks.

Atelier 96 is a modern beach home with 190 degree ocean views accessible from every public living space, private bedroom, and nook. Nestled within Atlantic Beach and Amagansett Lanes, Atelier 96 fosters a connection to the natural luxuries that surround and envelope the home. The master bedroom opens to the master deck with views of the boundless Atlantic ocean with the guest suite having private access to its own outdoor deck. Unobstructed ocean views continue through moments in home and onto the rooftop deck with an open fire pit and outdoor seating.

The residence represents the duality of our daily life, balancing luxury with a scent of simplicity. Atelier 96 inhabits the historic neighboring community, enhanced by private terraces and grande high ceilings. The home embodies exquisite detailing, modern conveniences, fine bespoke millwork, European white oak flooring, marble slab countertops and select wall surfaces.







The Design

Atelier 96 is curated to accommodate the needs of the 21st century homeowner by simultaneously integrating design, luxury, and technology. The residence is built with construction integrity combined with lasting luxury finishes.

Active and passive sustainable design, coupled with intricate architectural and native landscaping details, ensures that a comprehensive and efficient science-based approach has been implemented.

Designed with impressive proportions and a sense of purpose, the interiors address the duality of daily life with a considered balance of open expanses and private rooms with 9'-0" ceiling heights on all levels. The overall layout of the home reflects the sun's trajectory to maximize light over the course of the day with state-of-the-art climate control and dimming systems. The end result is the one-of-a-kind Atelier 96, executed with purpose and elegance. Acquire a moment of functional style by experiencing a Studio Zung design.

Total Habitable SQ Footage

8,600 ft² | 799 m²

Total Interior Liveable SQ Footage

5,080 ft² | 472 m²

Lower Level SQ Footage

1,560 ft² | 145 m²

First Floor SQ Footage

1,986 ft² | 185 m²

Second Floor SQ Footage

1,533 ft² | 143 m²

Roof Decks

1,010 ft² | 94 m²

Entry Deck

95 ft² | 9 m²

Patio

1,000 ft² | 93 m²

Pool

792 ft² | 74 m²

Heated

Garage SQ Footage

465 ft² | 43 m²





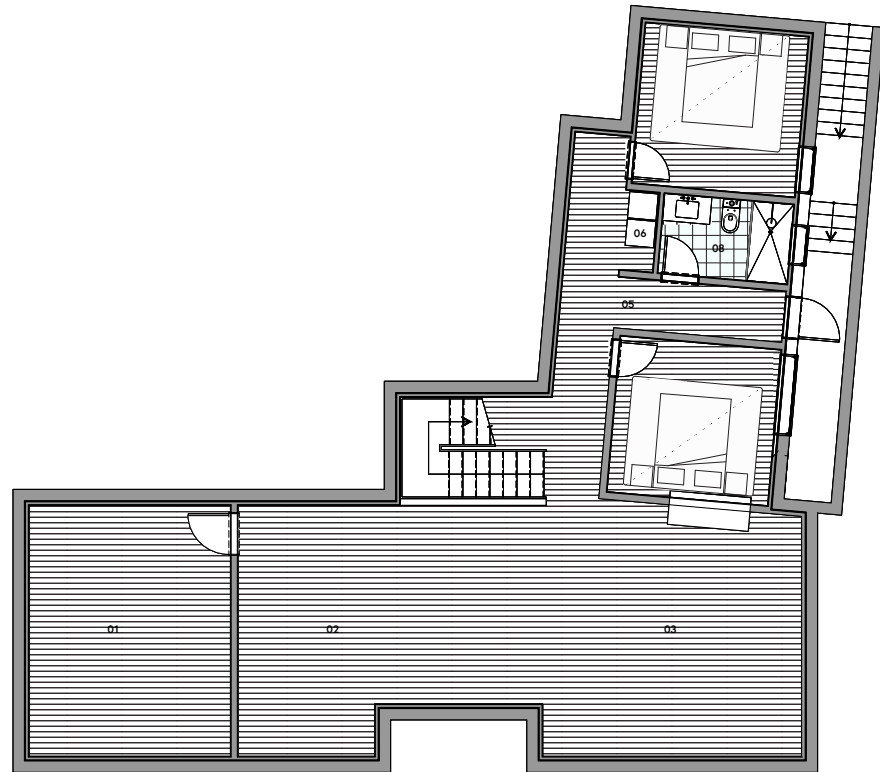


CONSTRUCTION
NORTH



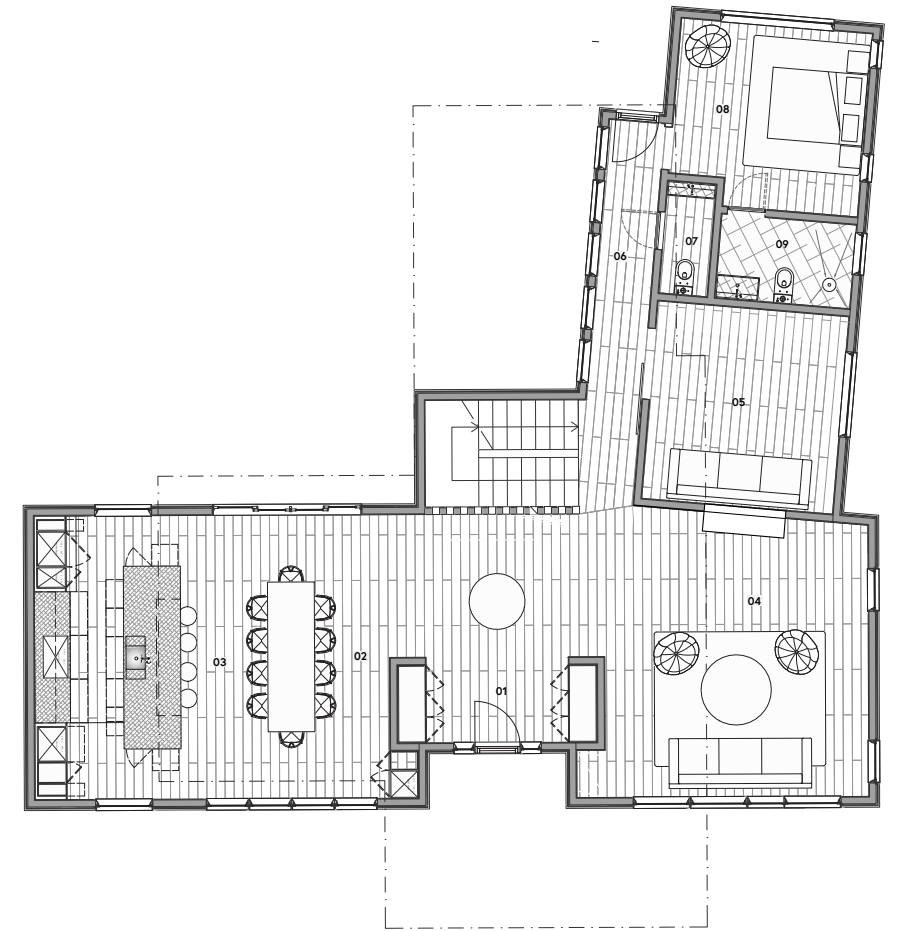
Site Plan

01	MECHANICAL ROOM	15' x 19'	280 SQ FT
02	PLAYROOM	23' x 19'	420 SQ FT
03	THEATER ROOM	19' x 19'	355 SQ FT
04	BEDROOM 5	12' x 12'	140 SQ FT
05	HALLWAY	17' x 27'	450 SQ FT
06	LAUNDRY	3' x 6'	13 SQ FT
07	BEDROOM 4	12' x 12'	135 SQ FT
08	BATH 4	10' x 6'	50 SQ FT



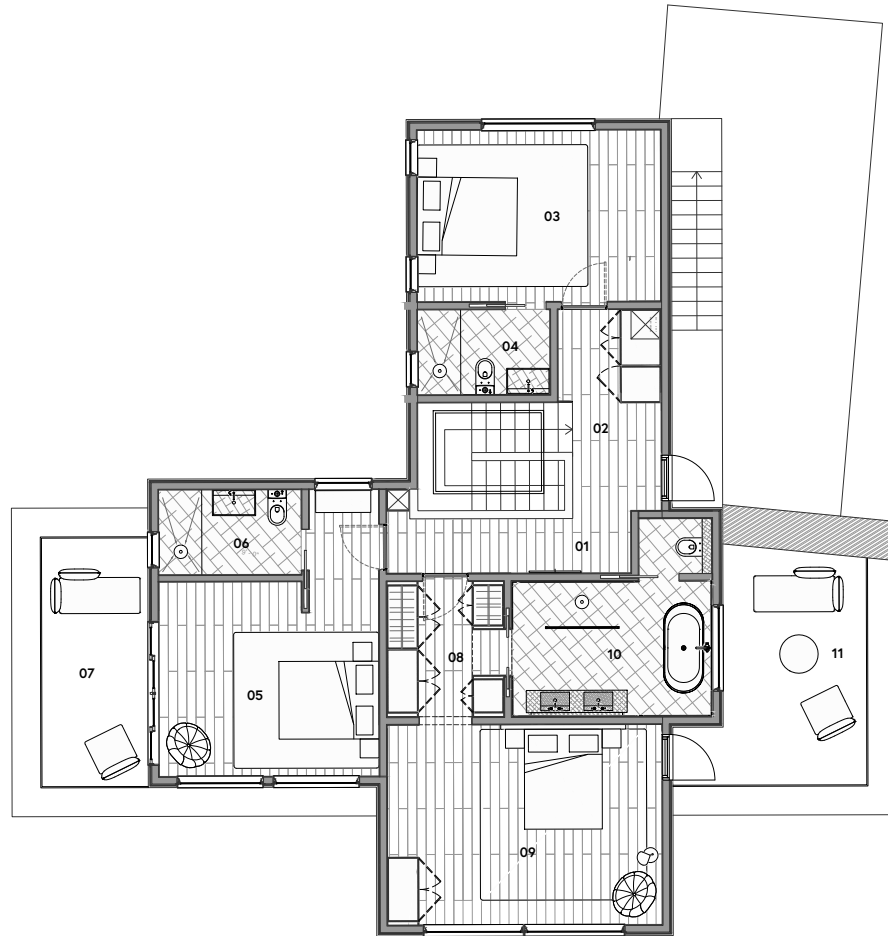
Lower Level Plan

01	ENTRY	11' x 16'	180 SQ FT
02	DINING ROOM	15' x 20'	270 SQ FT
03	KITCHEN	12' x 20'	230 SQ FT
04	LIVING ROOM	21' x 21'	424 SQ FT
05	FAMILY ROOM / DEN	14' x 14'	177 SQ FT
06	HALLWAY	4' x 27'	81 SQ FT
07	HALF BATH	4' x 8'	24 SQ FT
08	BEDROOM 3	14' x 14'	189 SQ FT
09	BATHROOM 3	10' x 6'	57.6 SQ FT



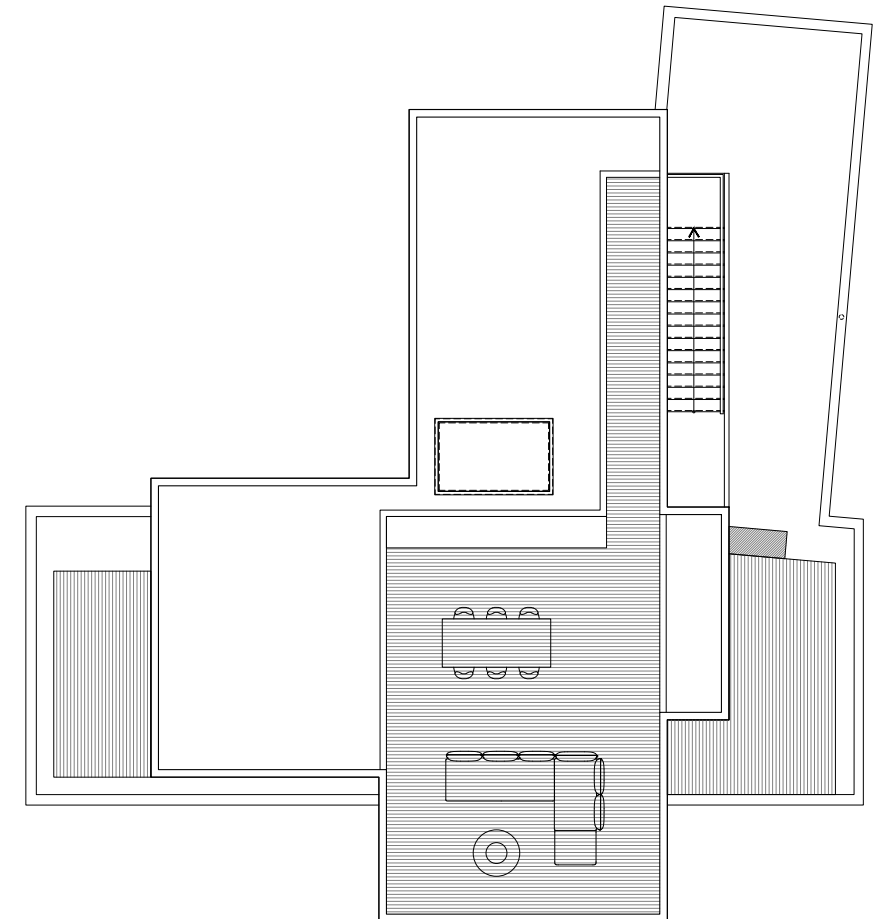
First Floor Plan

01	HALLWAY	19' x 12'	213 SQ. FT
02	LAUNDRY	6' x 7'	37 SQ. FT
03	BEDROOM 2	17' x 13'	205 SQ. FT
04	BATHROOM 2	10' x 7'	68 SQ. FT
05	BEDROOM 1	16' x 20'	303 SQ. FT
06	BATH 1	11' x 6'	63 SQ. FT
07	PRIVATE DECK	7' x 17'	105 SQ. FT
08	MASTER WALK-IN CLOSET	8' x 10'	78 SQ. FT
09	MASTER BEDROOM	15' x 14'	208 SQ. FT
10	MASTER BATHROOM	19' x 14'	250 SQ. FT
11	MASTER DECK	12' x 16'	180 SQ. FT

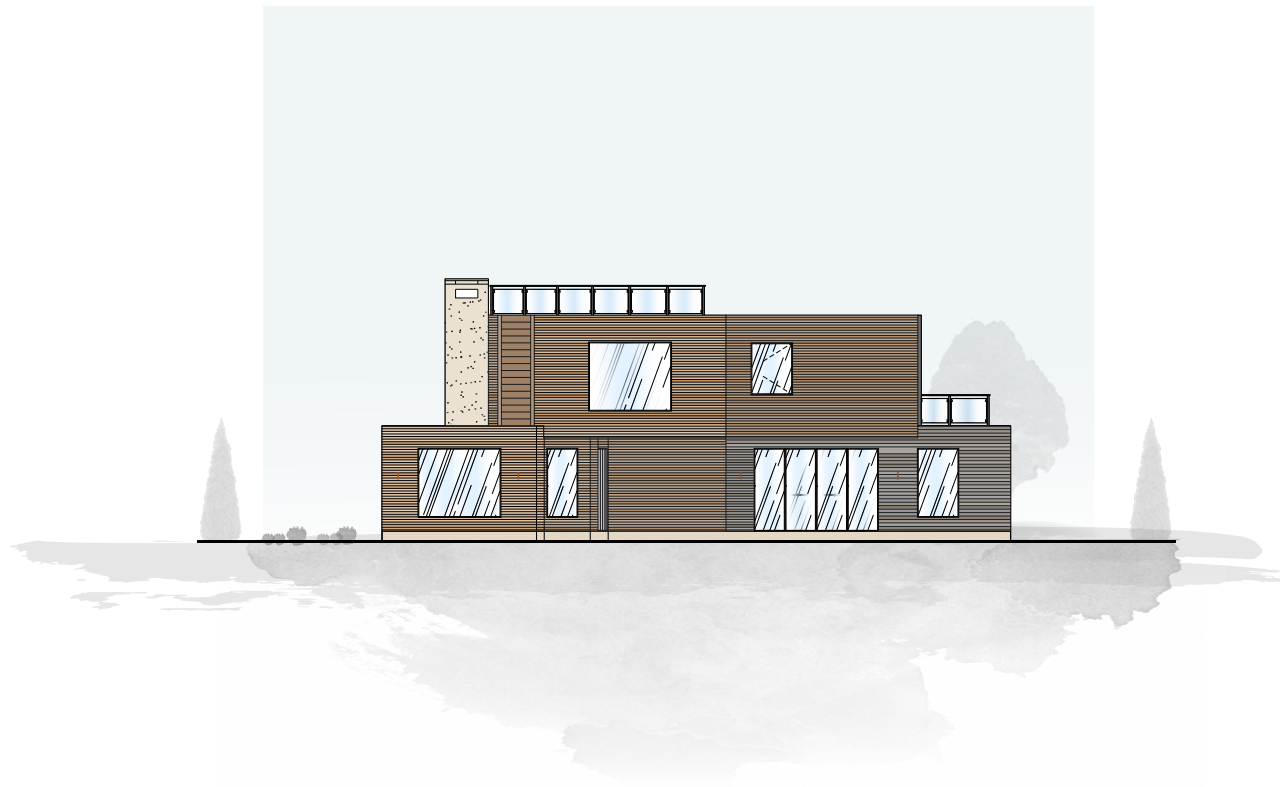


Second Floor Plan

1 ROOF DECK 20' x 31' | 606 SQ. FT



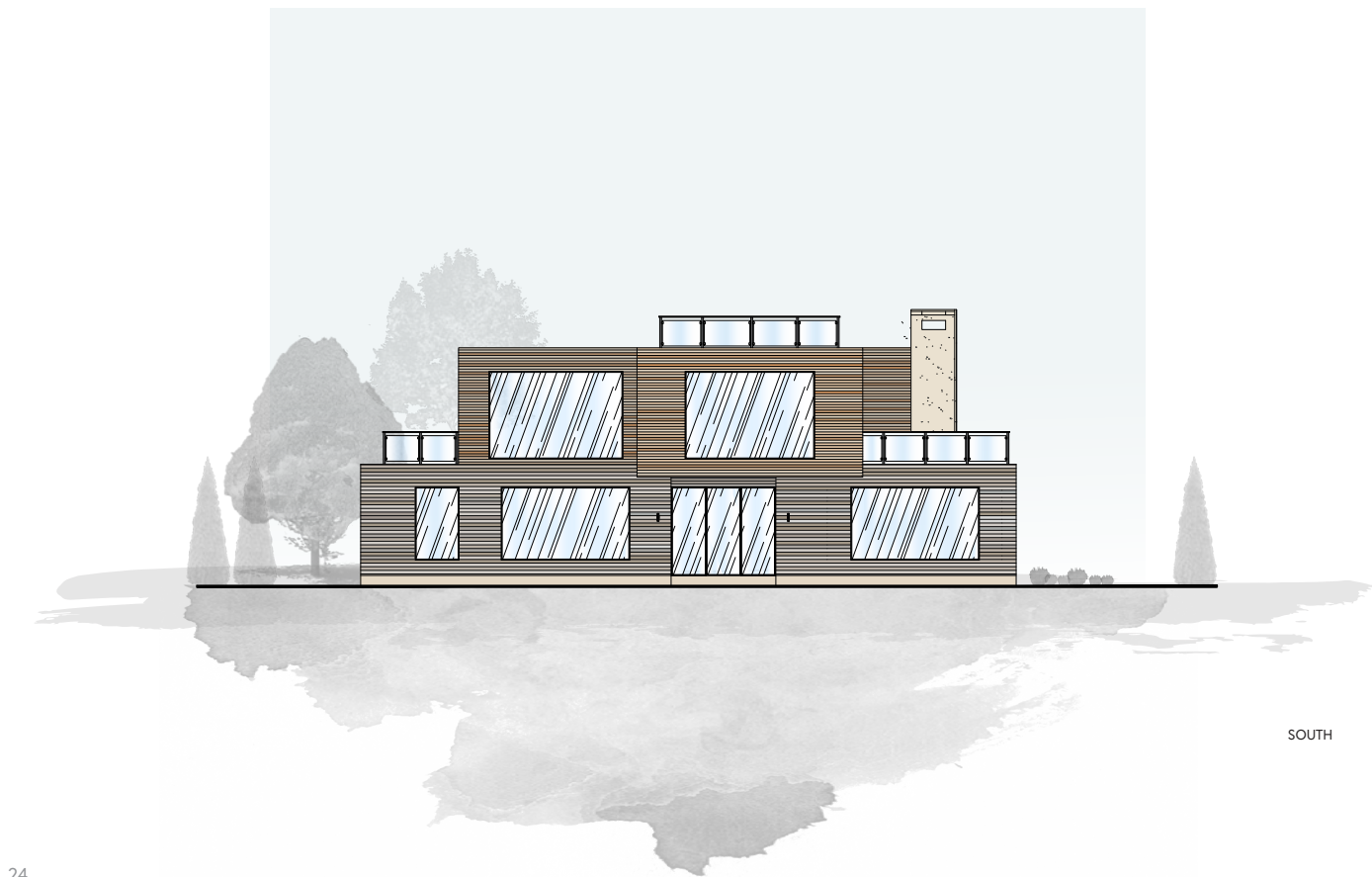
Roof Plan



NORTH



EAST

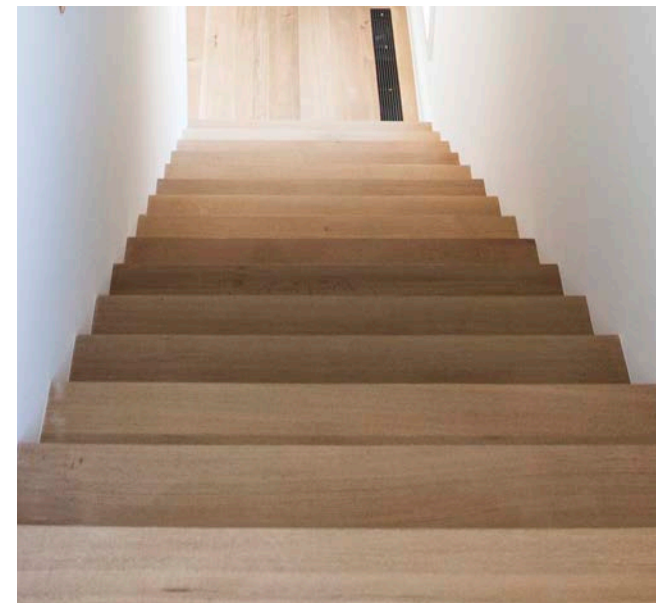


SOUTH



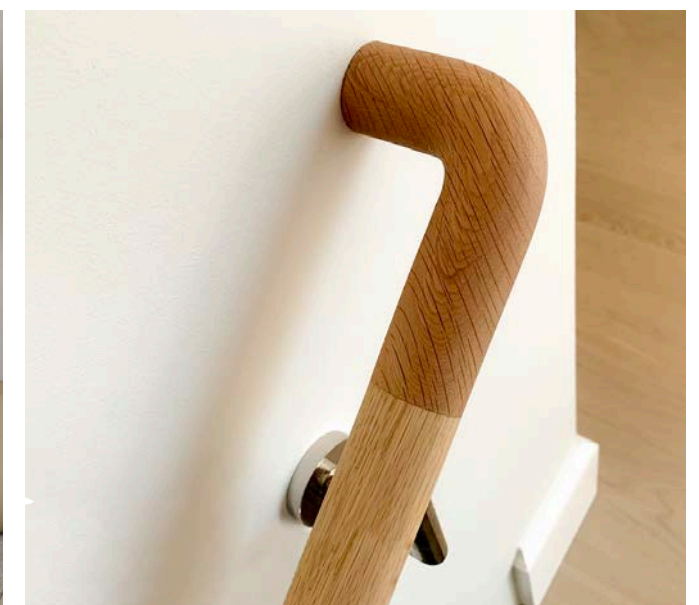
WEST

Specifications



A sanctuary emerges among the endless rows of greenery down the idyllic Bluff Road. Wooden cladding of interchanging Garapa intertwine with the warm cream to light sand stone veneer of Polycor limestone; the same stone used for New York City's landmark, Grand Central Terminal.

Atelier 96 has been designed with the most discerning of tastes in mind, and speaks to the level of craftsmanship and attention to detail expected from a building of its caliber. Floor plans at Atelier 96 have been meticulously crafted to maximize light, air, and floor area. The flooring in each unit is wide plank, European white oak with a clear matte finish. The ambiance and comfort of the residence is controlled by a combination of a NEST thermostat, and keyless entry system. Every Atelier by Studio Zung comes with a Fisher & Paykel washer and dryer.



Exterior Features

With our continued partnership with Polycor, a natural stones manufacturer in Canada, North America, and France, we design with the finest natural stone facade and hardscape products. In durability, appearance, and reputation, natural stone has no peers. Atelier 96 welcomes you with a warm embrace as the interchanging Indiana limestone facade pairs with the Garapa wood facade throughout. From the natural paths of winding walkways to the clean lines of the exterior facade and poolscapes with Polycor granite, Atelier 96's outdoor living spaces are made by nature and made to last generations.

Polycor Indiana limestone facade and Garapa wood facade, decking and fencing

Roof deck with 190 degree ocean views, BBQ and gas fire pit ready** (as per plan)

Private roof decks off Master Bedroom and Guest Suite

Saline ready* 20' x 40' heated pool

Outdoor shower ready

Professional security system capabilities* (as per plan) with 5 remote video surveillance cameras

Exterior Material Palette



Garapa wood facade, decking and fencing

Garapa (also known as Apuleia Leiocarpa, Brazilian Ash, Grapia, Amarealao, Marotoa, Muiratua, Muirajuba) native in South America, is one of the finest quality hardwoods available that features a fine-grained timber that is light yellow to a warm golden hue. Garapa is an exotic hardwood that is naturally resistant to rot, decay and insect attack. Garapa is naturally scratch resistant which allows the surface to remain smooth for many years, making Garapa a perfect wood for exterior decking. Garapa offers a 30 year plus lifespan without preservatives. Garapa is responsibly harvested from managed forest to provide a truly renewable resource.

Polycor Indiana limestone facade

Polycor Inc. is the world's leading natural stone quarrier and their core mission is to make people fall in love with natural stone. Their world-class reputation comes from a great legacy of stone work on historic landmarks, institutional, commercial and residential projects.

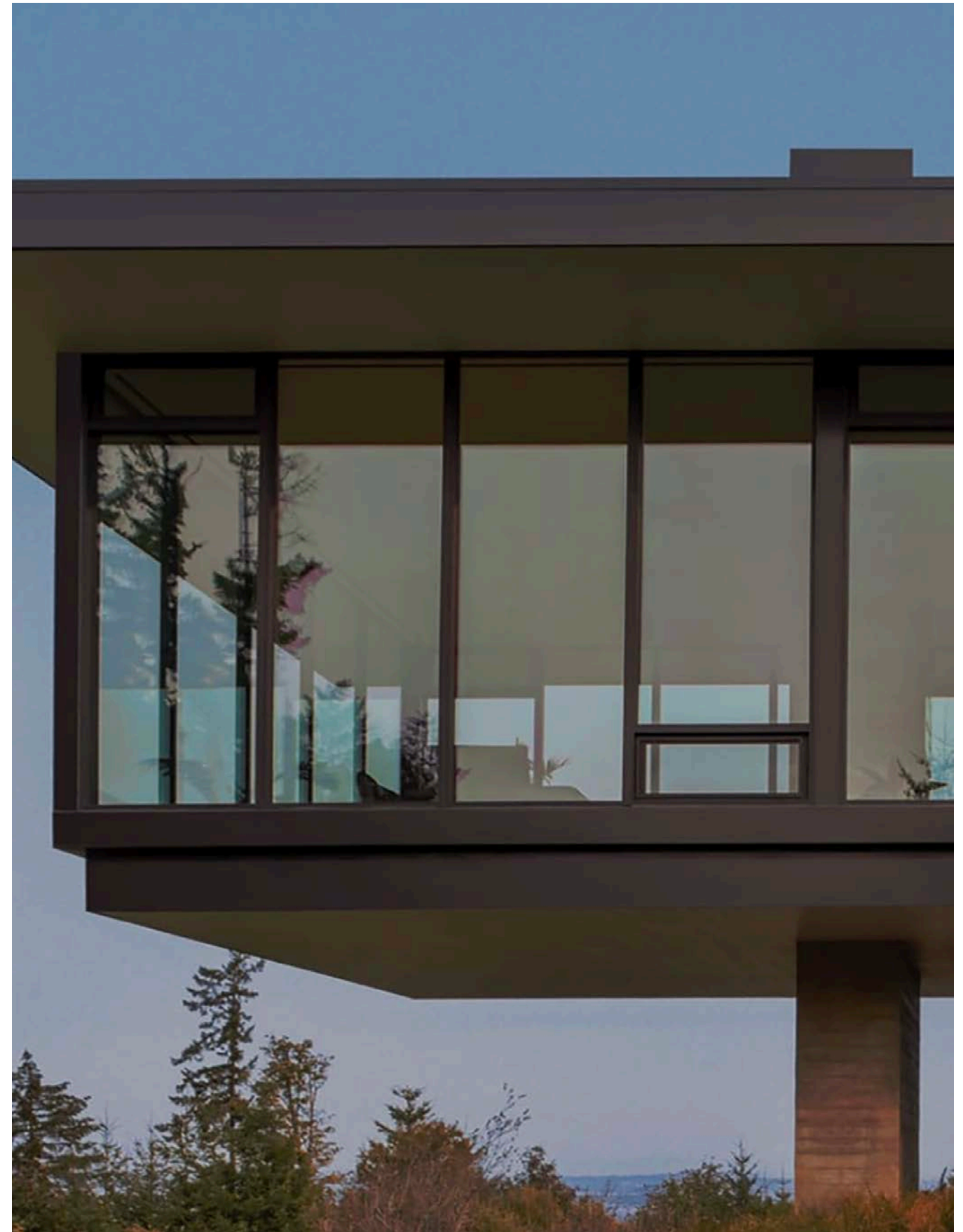
Windows and Doors

Fleetwood USA

In 1961, Fleetwood started manufacturing modern style doors and windows. Their vision is to design and create the finest products for elite luxury homes. Fleetwood provides a genuine lifetime warranty, with a simple and transferable warranty.

3-Series is Fleetwood's elite luxury product line, and was designed for the luxury home and high performance market. Though seemingly comparable to similar products on the market, all 3-Series products outclass the rest with exceptional features and a transferable lifetime warranty.

Finish: Black Class 1 Custom Anodized Kynar Paint
Black Matching Aluminum with Ultra Vue Mesh Screens



Interior Features

WOODlife European white oak wide plank flooring with hand oiled hard-wax oil matte finish

Wood burning fireplace with Gris De Savoie matte slabs

Studio Zung made solid oak wardrobes

Solid wood doors with Buster + Punch architectural hardware

Private master suite and guest suite decks

Individually zoned high efficiency low HERS rated HVAC system with Hepa Filter system and modern linear grills

Laundry rooms with Fisher & Paykel washer and dryer

Benjamin Moore low-VOC interior paint

Interior Material Palette



European white oak flooring

Gris De Savoie fireplace

First & Second Floor | Farrow & Ball Slipper Satin

Bedrooms | Farrow & Ball Shaded White

Natural white oak details

Lower Level | Farrow & Ball Strong White



Audio Visual Features

Whole house audio system with Sonos ready capabilities* (as per plan)

In-ceiling speakers in the kitchen, dining room and living room

Personal home server station in dedicated mechanical room

IoT Smart Home Features

The internet of things, or IoT, is a system of interrelated computing devices, mechanical and digital machines, objects, animals or people that are provided with unique identifiers (UIDs) and the ability to transfer data over a network without requiring human-to-human or human-to-computer interaction.

Lutron RadioRA2 lighting system* (as per plan)

Nest smart thermostats with remote temperature control

Nest smart smoke & Co2 alarm system

Smart home pre wired* (as per plan) for audiovisual system, Wi-Fi repeaters, climate control, and dimming system wired to home server station

IoT smart home electrical system connected to the propane generator, ensuring 24/7 automation

Lighting Fixtures

Allied Maker
A-Frame Half Dome 20"



• A-Frame Half Dome 20" shown in Matte White, Black Walnut & Maple, Matte White Globe

Allied Maker
Brass X4 Pendant



• Brass X4 shown in Brass, Opal Globe

Architectural Hardware

Buster + Punch
Cross Door Handle



• Passage door handles made from solid stainless steel. This door handle features Buster + Punch's signature, diamond-cut, cross-knurl pattern and is refined by hand

Buster + Punch
Cabinet Hardware



• Pull bars made from solid stainless steel. This pull bar features Buster + Punch's signature, diamond-cut, cross-knurl pattern and is refined by hand

Kitchen Features

The Atelier 96 kitchen is appointed with Studio Zung natural white oak and Wimborne White lacquered designed cabinets, Fisher & Paykel appliances and Fisher & Paykel refrigerators. All appliances have been panelized to maintain the elegant look and feel of this elevated finish package. Countertops and backsplashes are a Calacatta Statuario white slab complimented by Brizo fixtures.

WOODlife European white oak wide plank flooring with hand oiled hard-wax oil matte finish

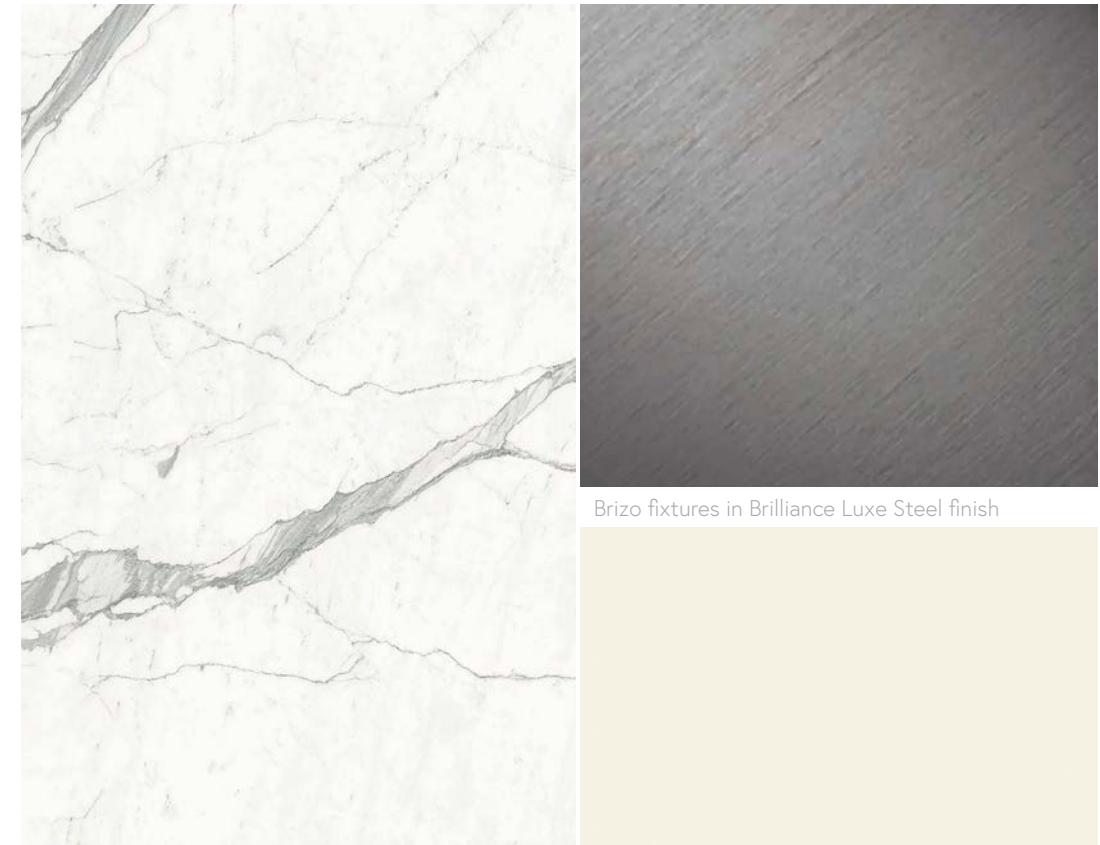
Calacatta Statuario polished slab countertops and backsplash

Natural white oak and Wimborne White lacquered kitchen cabinets

Fisher & Paykel kitchen appliances

Buster + Punch architectural hardware

Kitchen Material Palette



Calacatta Statuario polished countertops & backsplash

Brizo fixtures in Brilliance Luxe Steel finish

Wimborne White lacquered kitchen cabinets



European white oak flooring



Natural white oak kitchen cabinets

Kitchen Appliances

Fisher & Paykel
17 Function, Self-cleaning Oven 30"



- 4.1 cu ft total capacity, with 17 oven functions including Aero Pastry and Roast, Air Fry and Dehydrate

Fisher & Paykel
Integrated CoolDrawer™
Multi-temperature Drawer



- Variable Temperature Zone lets you change between five different food modes – refrigerator, freezer, pantry, chill and wine

Fisher & Paykel
Integrated Refrigerator Freezer, 24"



- Variable Temperature Zones with the choice of four food modes: Pantry, Fridge, Soft Freeze or Freezer
- Convenient access to fresh, chilled water and ice with internal water dispenser and ice maker

Fisher & Paykel
Integrated Column Wine Cabinet 24"



- A generous 91 bottle capacity, with optional display capability for your favorite bottles
- Two independent Variable Temperature Zones, each with four wine modes

Fisher & Paykel
Induction Cooktop 36"



- 5 zones with SmartZone
- Child and pet safe - cooktop remains cool to touch until a pot or pan is placed on the surface
- Touch&Slide, including pairing cook zones to create a large SmartZone

Fisher & Paykel
Integrated Double DishDrawer™



- Knock to pause function
- Six wash programs, as well as additional Quick wash, Sanitize and Extra Dry options
- Built-in water softener improves wash performance by reducing unwanted minerals in the water

Fisher & Paykel
Front Load Washer, 2.4 cu ft



- 13 wash cycles including Handwash, Quick and Sanitize
- Energy Star certified

Fisher & Paykel
Condensing Dryer, 4.0 cu ft



- 13 dry cycles including Sheets, Delicate and Sanitize to cater for every type of load
- Auto-sensing detects moisture levels to prevent under or over-drying

Master Bedroom Suite Features

WOODlife European white oak flooring with hand oiled hard-wax oil matte finish in Creme Chantilly

Master walk-in closet with Studio Zung cabinetry in natural white oak paneling

Bespoke Studio Zung master bedroom cabinetry options available upon consultation ***

Master Bedroom Suite Material Palette



Farrow & Ball Wevet paint

European white oak flooring

Natural white oak closets

Master Bathroom Features

The Master Bathroom at Atelier 96 is also outfitted with Studio Zung Wimborne White lacquered designed cabinets as found in the kitchens, as well as Brizo, and Buster & Punch hardware and fixtures.

Arabescato Classico polished Marmi Maximum walls and floors

Studio Zung Wimborne White lacquered vanity with Arabescato Classico polished slab counter

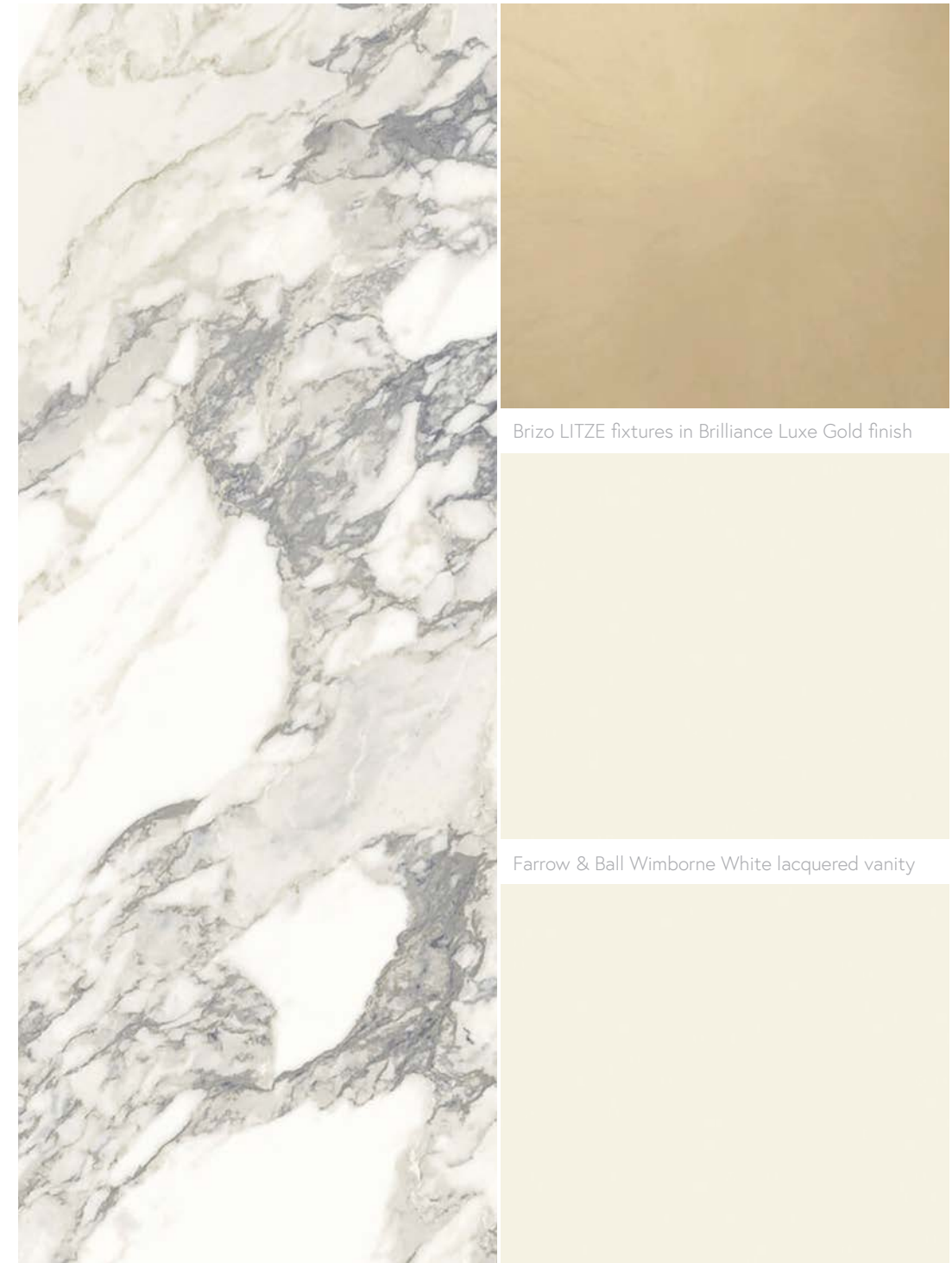
Duravit sinks and toilets

Formoso Grande Free-standing bathtub in White

Linea recessed lighted cabinet vanity mirrors

Brizo LITZE Collection fixtures with H2Okinetic technology in Brilliance Luxe Gold finishes ****

Master Bathroom Material Palette



Brizo LITZE fixtures in Brilliance Luxe Gold finish

Farrow & Ball Wimborne White lacquered vanity

Arabescato Classico polished Marmi Maximum walls, floors, countertop

Farrow & Ball Wimborne White paint

Master Bathroom Fixtures

Formoso Grande
Free-standing bathtub



- The pared down lines and ergonomic shape support a balanced environment for a soothing soak
- Constructed of ClearStone material engineered to resist stain, retain heat and minimize maintenance

Linea
Recessed lighted cabinet vanity mirror



- A crystal-clear mirror with premium daylight LED lighting

Brizo
LITZE Slide Bar Handshower



- 3-function handshower with H₂Okinetic Spray, Massage Spray, Pause
- In Brilliance Luxe Gold

Brizo
LITZE Widespread Lavatory Faucet



- Spout features hidden water-efficient, laminar flow aerator
- Industrial Lever in Brilliance Luxe Gold

Bathroom Features

The bathrooms at Atelier 96 are also outfitted with Studio Zung Wimborne White lacquered designed cabinets as found in the kitchens, as well as Brizo, and Buster & Punch hardware and fixtures.

Calacatta Statuario polished Marmi Maximum walls

Polycor American Mist granite flooring

Studio Zung Wimborne White lacquered vanities with Calacatta Statuario polished slab counters

Duravit sinks and toilets

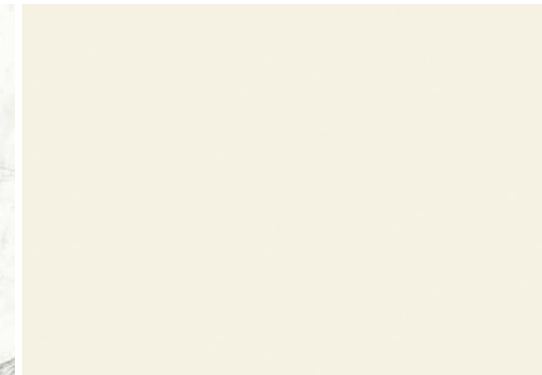
Linea recessed lighted cabinet vanity mirrors

Brizo LITZE Collection fixtures in Brilliance Luxe Nickel finishes ****

Bathroom Material Palette



Calacatta Statuario polished Marmi Maximum walls



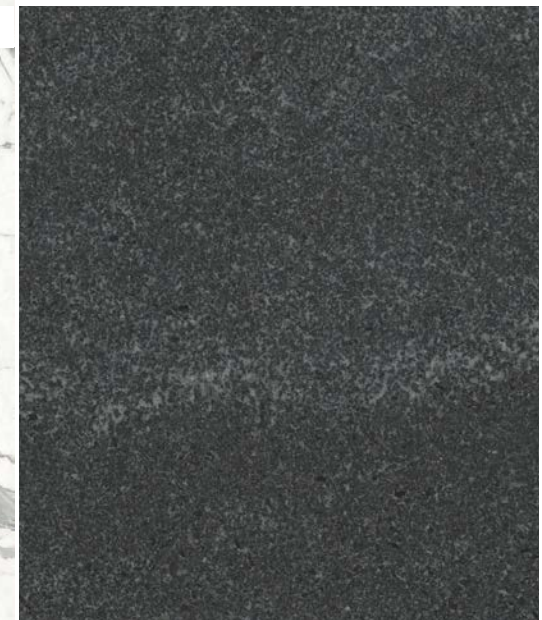
Farrow & Ball Wimborne White paint



Brizo LITZE fixtures in Brilliance Luxe Nickel finish



Calacatta Statuario polished slab counters



American Mist granite flooring

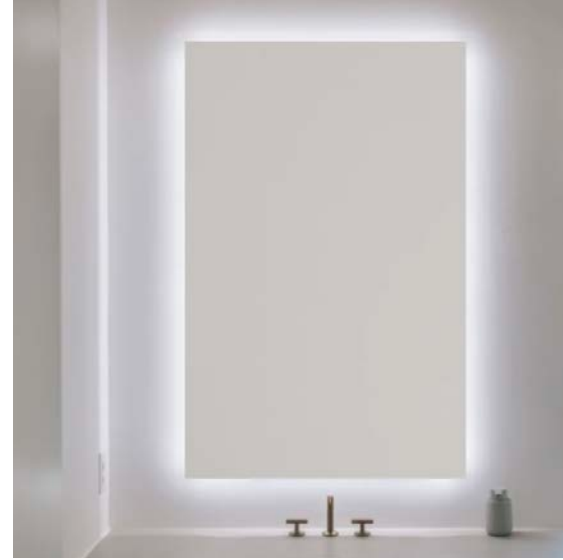
Bathroom Fixtures

Studio Zung
Vanities



- Studio Zung vanities with slab counters

Linea
Recessed lighted cabinet vanity mirrors



- A crystal-clear mirror with premium daylight LED lighting

Brizo
LITZE Slide Bar Handshower



- 3-function handshower with H₂Okinetic Spray, Massage Spray, Pause
- In Brilliance Luxe Nickel

Brizo
LITZE Widespread Lavatory Faucet



- Spout features hidden water-efficient, laminar flow aerator
- Industrial Lever in Brilliance Luxe Nickel

Brizo® for Atelier by Studio Zung

Consulting Design by Tommy Zung

Tommy Zung, Principal of Studio Zung, was the consulting designer for the Brizo LITZE collection presenting storyboards; design direction; fixture design language; and fixture detailing that was ultimately the driving and consulting design of the LITZE Collection.

LITZE™ Kitchen Collection Features

Kitchen Faucet

Inspired by the definitive functionality of an architect's lamp, this clever twist on the classic pull-down faucet allows the spray wand to be positioned virtually anywhere needed for the task at hand. For maximum flexibility, the wand can also be easily undocked.

SmartTouch® Technology

SmartTouch Technology activates water flow with a simple touch to the faucet body, spout or handle, bringing a new level of convenience to the kitchen. This functionality makes it easy to activate water flow only when needed, helping reduce water usage and promoting efficiency.

Water-Efficient

Brizo kitchen faucets flow at an efficient 1.8 gallons per minute (6.8 Liters per minute), less than industry standard.

Kitchen And Bath Fittings By Brizo®

By combining a refined aesthetic with inventive technologies, Brizo kitchen and bath products seamlessly meld and function and form, providing distinctive designs that deliver exceptional performance while also being water efficient.

LITZE™ Bath Collection Features

TempAssure® Thermostatic Valving

Works like a thermostat in medium-flow showers to measure and monitor the temperature of the water and automatically adjust the water mix to maintain a more precise water temperature.

H₂Okinetic® Technology

By controlling the shape, velocity and thermal dynamics of water, handshowers and showerheads featuring H₂Okinetic Technology create a warmer, more luxurious spray that gives the feeling of a high-flow spray while using less water.

WaterSense® Labeled

Special certification given to taps that meet the water efficiency specifications set forth by the U.S. Environmental Protection Agency, with a flow rate of 1.5 gallons per minute for lavatory taps and 2.0 gallons per minute for showerheads and handshowers. In addition to consuming less water, WaterSense labeled products perform as well or better than less efficient models.

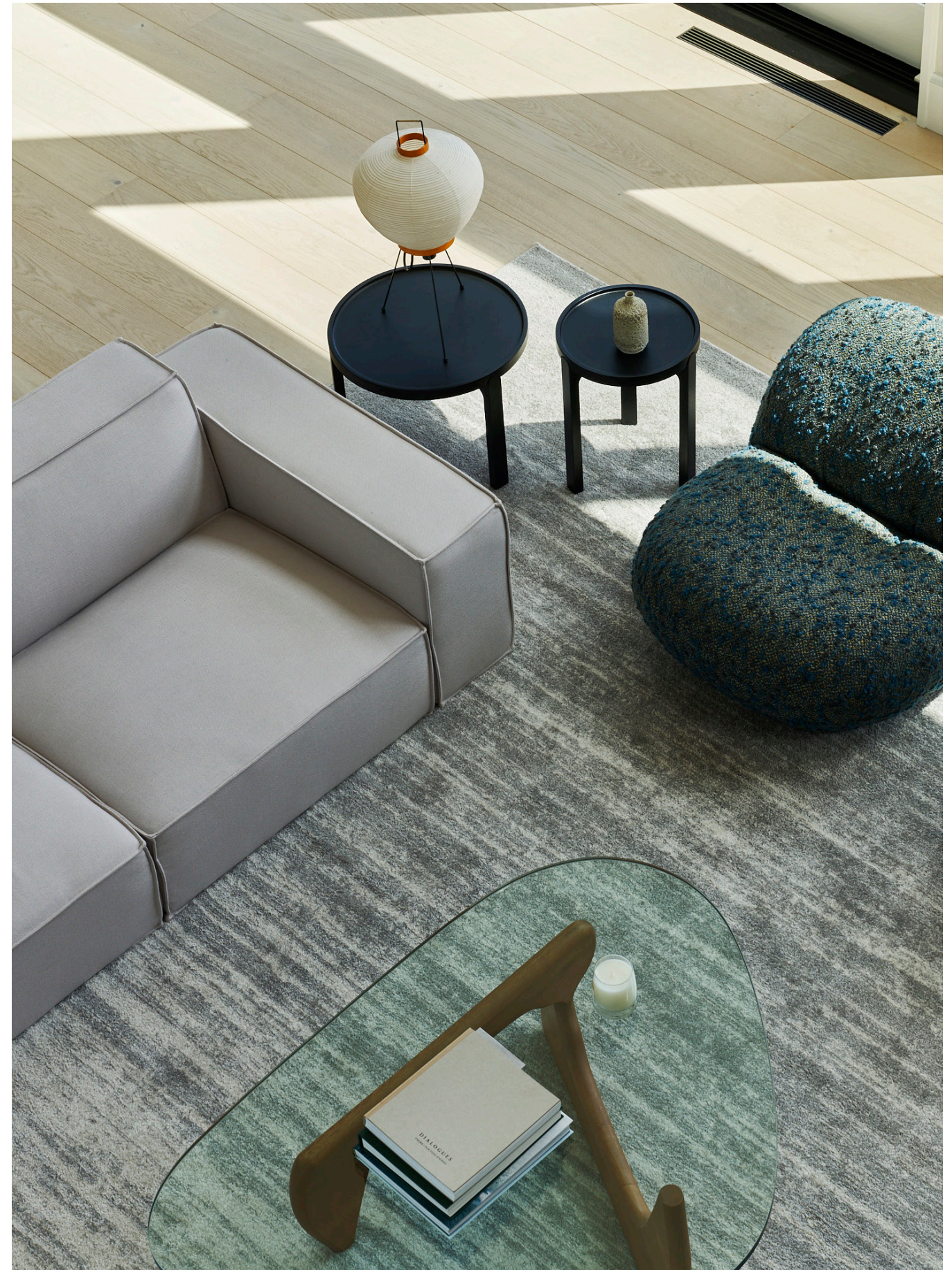


Furniture Electives

Materials Matter

We believe in choosing the furniture in our homes wisely because we want things that last, last for a long time. To challenge the throw-away mentality, we specify brands and pieces with the highest quality materials that create timeless, living environments that age beautifully.

For more detailed information on the furniture electives, please refer to our Atelier by Studio Zung Furniture Catalog.



Collector's Art

Hanuk



Title: Egg 18
Year: 2014
Description: Oil on linen, thread
Dimensions: 40 x 30 in.
Price: \$5,000 / 4,660 €

Joe Henry Baker



Title: Only These Sounds
Year: 2022
Description: Fabric dye and bleach on canvas, pine wood frame
Dimensions: 58 x 84 in.
Price: Please enquire for pricing

Steven Schrenk



Title: Fluidessence
Year: 2015
Description: White Cherokee marble
Dimensions: 14 x 26 x 10 in.
Price: \$3,300 / 2,858 €

Mitch Iburg



Title: Narrow Rim Vessel #42
Year: 2021
Description: Foraged Clays and minerals, fired to 2200 F. in oxidation
Dimensions: 14.5 x 10.5 in.
Price: \$1,400 / 1,240 €

Adrian Gaut



Title: Wilshire Blvd
Year: 2017
Description: Digital Pigment Print of Archival Paper
Dimensions: 44 x 60 in. (110 x 150 cm.)
Price: \$2,250 / 1,950 €

Hugh Holland



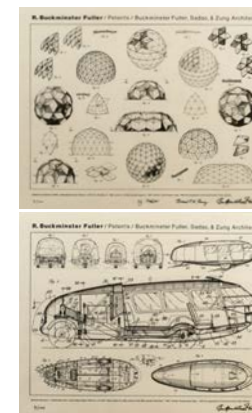
Title: The Concrete Swell, Viper Bowl Hollywood
Year: 1976
Description: Photograph, gelatin silver print. Edition of 5 plus 2 artist's proofs
Dimensions: 30 x 40 in. (76.2 x 101.6 cm.)
Price: \$4,600 / 3,980 €

Buckminster Fuller



Title: Thirty Strut Tensegrity Dome, 1981
Year: 1981
Description: Stainless steel rods and stainless wire tendons. Edition of 10.
Dimensions: 16 in. diameter (41 cm diameter)
Price: \$50,000 / 43,300 €

Buckminster Fuller



Title: Dymaxion Car and Geodesic Structure; set of two prints, edition of 100, with only 50 for sale, rest on reserve
Year: 1981
Description: Laser on Mulberry; Kozo paper
Dimensions: 24 x 18 in. (45 x 61 cm)
Price: \$5,000 / 4,330 €

The artworks presented for view (and purchase) are tailored to highlight the unique potential of the living space of each Atelier by Studio Zung. Crowning the union of architecture and design, they invite the future owner of the residence to take a personal art journey, indulge in it, and make it their own.

Thoughtfully curated from private collections as well as commissioned pieces specifically for the project, they speak about expansion – both visual and conceptual. We invite established and upcoming artists to translate our understanding of the interconnection between thought, objects and life.

Studio Zung

Great buildings. Great brands. Great Experiences.

Studio Zung is a multi disciplinary architectural design and branding firm that creates aesthetically beautiful, economically responsible, environmentally sustainable spaces and environments. With recognition from Architectural Digest, Interior Design Magazine, Monocle, and Design Milk, Studio Zung has designed and built numerous noteworthy residences and hotels in the Hamptons, a private residence in Bridgehampton for the founder of Bumble & Bumble, and designed the concept behind Mosaic Hotel by Highgate Hotel in Beverly Hills, among others.

At Studio Zung every project begins with a thoughtful and innovative concept and transforms into an intelligent, inspiring, and remarkable human environment. We believe every project should not only be meaningful and beautiful, but also economically responsible and environmentally sustainable.

Every detail, every decision of Atelier by Studio Zung is taken care of by our award winning architects and designers who, after decades of industry experience, understand and epitomize the Studio Zung lifestyle - simple, holistic, and luxurious design. This lifestyle translates into the Atelier by Studio Zung Residences: highly intelligent, integrated, and extraordinarily stylish homes.



Terms and Definitions

* Standard Configurations

Standard configurations are defined as indicated on plans with extra options to customize and built to suit as desired

** Termination Points

Rough utility lines set to termination point or shut off

*** Handcrafted Furniture, Bespoke Kitchens, Tailored Wardrobes & Fine Cabinetry

Studio Zung designs, manufactures, and installs luxury kitchens, vanities, and wardrobes with all of our senses considered. Not mass produced to fit the tastes of the many, but fine-tuned to work harmoniously with each environment, our handcrafted furniture is handmade and bespoke on all levels, from conception to completion. The choice of home installation and delivery is yours. For more information, please request to view our Handcrafted Furniture, Bespoke Kitchens, Tailored Wardrobes & Fine Cabinetry catalog

**** Brizo Fixture Finish Modification

The trim finishes can be easily changed with a nominal additional charge



New Construction Warranty

Housing Merchant Implied Warranty | SECTION 777-A

§ 777-a. Housing merchant implied warranty.

1. Notwithstanding the provisions of section two hundred fifty-one of the real property law, a housing merchant implied warranty is implied in the contract or agreement for the sale of a new home and shall survive the passing of title. A housing merchant implied warranty shall mean that:

a. one year from and after the warranty date the home will be free from defects due to a failure to have been constructed in a skillful manner;

b. two years from and after the warranty date the plumbing, electrical, heating, cooling and ventilation systems of the home will be free from defects due to a failure by the builder to have installed such systems in a skillful manner; and

c. six years from and after the warranty date the home will be free from material defects.





Keep in touch

Atelier by Studio Zung

41 Grand Street
New York, NY 10013
+ 1 212 343 8391
info@studiozung.com

atelierbystudiozung.com
studiozung.com

@studiozung
#atelierbystudiozung
#atelier96



96 Bluff Road